

# STING/TMEM173 Rabbit pAb

货号: **AYP25062**

## 产品信息

反应	Human,Mouse,Rat
宿主	Rabbit
克隆性	Polyclonal
预测反应	<b>WB:</b> HT-29 cells , Mouse MEF , Mus musculus , Homo sapiens , Rattus norvegicus , Cynoglossus semilae vis <b>IP:</b> HT-29 cells , THP1 , Mus musculus , Homo sapiens <b>IHC:</b> Homo sapiens,Mus musculus <b>IF:</b> Homo sapiens,Mus musculus , Rattus norvegicus
应用	<a href="#">WB</a> <a href="#">IHC</a> <a href="#">IF/ICC</a> <a href="#">IP</a>
推荐浓度	<b>WB:</b> 1:100 - 1:500 <b>IHC:</b> 1:50 - 1:200 <b>IF/ICC:</b> 1:50 - 1:200 <b>IP:</b> 1:100 - 1:500
理论分子量	42kDa
实测分子量	40KDa
形式	Liquid
保存条件	Store at -20°C. Avoid freeze / thaw cycles. Buffer: PBS with 0.05% proclin300,50% glycerol,pH7.3.
偶联物	Unconjugated
阳性对照	THP-1,Mouse spleen,Mouse thymus,Rat thymus,Rat lung
细胞定位	Cell membrane,Cytoplasm,Endoplasmic reticulum membrane,Mitochondrion outer membrane,Multi-pass membrane protein,perinuclear region
纯化	Affinity purification

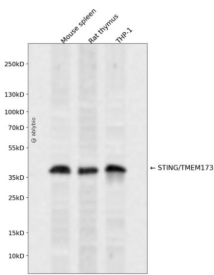
## 抗原信息

抗原信息	A synthetic phosphorylated peptide around S366 of human STING/TMEM173 (NP_938023.1).
序列	LISGM

## 靶点信息

研究背景	This gene encodes a five transmembrane protein that functions as a major regulator of the innate immune response to viral and bacterial infections. The encoded protein is a pattern recognition receptor that detects cytosolic nucleic acids and transmits signals that activate type I interferon responses. The encoded protein has also been shown to play a role in apoptotic signaling by associating with type II major histocompatibility complex. Mutations in this gene are the cause of infantile-onset STING-associated vasculopathy. Alternate splicing results in multiple transcript variants.
基因ID	340061
基因名	TMEM173
Swiss	Q86WV6
别名	TMEM173;ERIS;MITA;MPYS;NET23;SAVI;STING;hMITA;hSTING

## 产品验证



Western blot analysis of STING/TMEM173 expressed in Mouse spleen, Rat thymus, THP-1 using STING/TMEM173 Rabbit pAb at 1:1000. Secondary antibody: HRP Goat Anti-Rabbit IgG (H+L) at 1:5000. Lysates/proteins: 30ug per lane. Blocking buffer: 5% non-fat dry milk in TBST. Detection: ECL Enhanced Kit. Exposure time: 120s.

## 实验步骤

访问官网浏览详情: [www.ablybio.cn](http://www.ablybio.cn)