

ASC/TMS1 Rabbit pAb

货号: **AYP25060**

产品信息

反应	Human,Mouse,Rat
宿主	Rabbit
克隆性	Polyclonal
预测反应	WB: Rat brain , Mus musculus , Rattus norvegicus , Homo sapiens IHC: Rat brain , Rattus norvegicus
应用	WB IF/ICC
推荐浓度	WB: 1:500 - 1:1000 IF/ICC: 1:50 - 1:200
理论分子量	15kDa/19kDa/21kDa
实测分子量	15-19KDa/20KDa
形式	Liquid
保存条件	Store at -20°C. Avoid freeze / thaw cycles. Buffer: PBS with 0.05% proclin300,50% glycerol,pH7.3.
偶联物	Unconjugated
阳性对照	Mouse spleen
细胞定位	Cytoplasm,Endoplasmic reticulum,Mitochondrion,Nucleus
纯化	Affinity purification

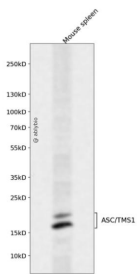
抗原信息

抗原信息	A synthetic peptide corresponding to a sequence within amino acids 1-50 of human ASC/TMS1 (NP_03739 0.2).
序列	MGRARDAILDALENLTAELKKFKLKLLSVPLREGYGRIPRGALLSMDAL

靶点信息

研究背景	This gene encodes an adaptor protein that is composed of two protein-protein interaction domains: a N-terminal PYRIN-PAAD-DAPIN domain (PYD) and a C-terminal caspase-recruitment domain (CARD). The PYD and CARD domains are members of the six-helix bundle death domain-fold superfamily that mediates assembly of large signaling complexes in the inflammatory and apoptotic signaling pathways via the activation of caspase. In normal cells, this protein is localized to the cytoplasm; however, in cells undergoing apoptosis, it forms ball-like aggregates near the nuclear periphery. Two transcript variants encoding different isoforms have been found for this gene.
基因ID	29108
基因名	PYCARD
Swiss	Q9ULZ3
别名	PYCARD;ASC;CARD5;TMS;TMS-1;TMS1;PYD and CARD domain containing;ASC / TMS1

产品验证



Western blot analysis of ASC/TMS1 expressed in Mouse spleen using ASC/TMS1 Rabbit pAb at 1:1000. Secondary antibody: HRP Goat Anti-Rabbit IgG (H+L) at 1:5000. Lysates/proteins: 30ug per lane. Blocking buffer: 5% non-fat dry milk in TBST. Detection: ECL Enhanced Kit. Exposure time: 120s.

实验步骤

访问官网浏览详情: www.ablybio.cn