

TLR1 Rabbit pAb

货号: **AYP25055**

产品信息

反应	Human,Mouse,Rat
宿主	Rabbit
克隆性	Polyclonal
预测反应	
应用	WB IHC IF/ICC
推荐浓度	WB: 1:500 - 1:1000 IHC: 1:50 - 1:200 IF/ICC: 1:50 - 1:200
理论分子量	90kDa
实测分子量	90KDa
形式	Liquid
保存条件	Store at -20°C. Avoid freeze / thaw cycles. Buffer: PBS with 0.05% proclin300,50% glycerol,pH7.3.
偶联物	Unconjugated
阳性对照	Mouse large intestine,Rat large intestine
细胞定位	Cell membrane,Cytoplasmic vesicle,Single-pass type I membrane protein,phagosome membrane
纯化	Affinity purification

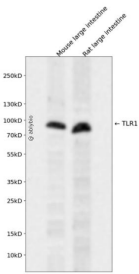
抗原信息

抗原信息	Recombinant fusion protein containing a sequence corresponding to amino acids 30-290 of human TLR1 (NP_003254.2).
序列	DRSKNGLIHVPKDL SQKTTILNISQNYISELWTS DILSLSKLRILII SHNRIQYLDISVFKFNQELEYLDLSHNKLVKISCHPTVNL KHL DLSFN AFDALPICKEFGNMSQLKFLGLSTTHLEKSSVLP IAHLNISKVLLVLGETYGEKEDPEGLQDFNTESLHIVFPTN KEFH FILDVSVKTVANLELSNIKCVLEDNKCSYFLSILAKLQTNPKLSNLTLNNIETT WNSFIRILQLVWHTTVWYFISISNVKL QGQLDFR

靶点信息

研究背景	The protein encoded by this gene is a member of the Toll-like receptor (TLR) family which plays a fundamental role in pathogen recognition and activation of innate immunity. TLRs are highly conserved from <i>Drosophila</i> to humans and share structural and functional similarities. They recognize pathogen-associated molecular patterns (PAMPs) that are expressed on infectious agents, and mediate the production of cytokines necessary for the development of effective immunity. The various TLRs exhibit different patterns of expression. This gene is ubiquitously expressed, and at higher levels than other TLR genes. Different length transcripts presumably resulting from use of alternative polyadenylation site, and/or from alternative splicing, have been noted for this gene.
基因ID	7096
基因名	TLR1
Swiss	Q15399
别名	TLR1;CD281;TIL;TIL. LPRS5;rsc786;TIL.LPRS5

产品验证



Western blot analysis of TLR1 expressed in Mouse large intestine, Rat large intestine using TLR1 Rabbit pAb at 1:1000. Secondary antibody: HRP Goat Anti-Rabbit IgG (H+L) at 1:5000. Lysates/proteins: 30ug per lane. Blocking buffer: 5% non-fat dry milk in TBST. Detection: ECL Enhanced Kit. Exposure time: 120s.

实验步骤

访问官网浏览详情: www.ablybio.cn