

CLEC7A Rabbit pAb

货号: **AYP25052**

产品信息

反应	Human,Mouse,Rat
宿主	Rabbit
克隆性	Polyclonal
预测反应	WB: Sus scrofa , Mus musculus
应用	WB
推荐浓度	WB: 1:500 - 1:2000
理论分子量	5kDa/8kDa/13-27kDa
实测分子量	31kDa
形式	Liquid
保存条件	Store at -20°C. Avoid freeze / thaw cycles. Buffer: PBS with 0.02% sodium azide,50% glycerol,pH7.3.
偶联物	Unconjugated
阳性对照	H-460,SGC-7901,HL-60,Mouse spleen,Mouse thymus,Mouse liver,Mouse lung,Rat spleen
细胞定位	Cell membrane,Cytoplasm,Single-pass type II membrane protein
纯化	Affinity purification

抗原信息

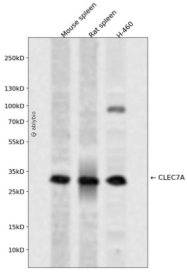
抗原信息	A synthetic peptide corresponding to a sequence within amino acids 100 to the C-terminus of human CLE C7A (NP_922938.1).
序列	LEDSVTPTKAVKTTGVLSSPCPPNWIIEKSCYLFSMSLNSWDGSKRQCWQLGSNLLKIDSSNELGFIVKQVSSQPDNSF WIGLSRPQTEVPWLWEDGSTFSSNLFQIRTTATQENPSPNCVWIHVSVIYDQLCSVPSYSICEKKFSM

靶点信息

研究背景	This gene encodes a member of the C-type lectin/C-type lectin-like domain (CTL/CTLD) superfamily. The encoded glycoprotein is a small type II membrane receptor with an extracellular C-type lectin-like domain fold and a cytoplasmic domain with an immunoreceptor tyrosine-based activation motif. It functions as a pattern-recognition receptor that recognizes a variety of beta-1,3-linked and beta-1,6-linked glucans from fungi and plants, and in this way plays a role in innate immune response. Alternate transcriptional splice variants, encoding different isoforms, have been characterized. This gene is closely linked to other CTL/C TLD superfamily members on chromosome 12p13 in the natural killer gene complex region.
------	---

基因ID	64581
基因名	CLEC7A
Swiss	Q9BXN2
别名	CLEC7A;BGR;CANDF4;CD369;CLECSF12;DECTIN1;SCARE2

产品验证



Western blot analysis of CLEC7A expressed in Mouse spleen,Rat spleen,H-460 using CLEC7A Rabbit pAb at 1:1000. Secondary antibody: HRP Goat Anti-Rabbit IgG (H+L) at 1:5000. Lysates/proteins: 30ug per lane. Blocking buffer: 5% non-fat dry milk in TBST. Detection: ECL Enhanced Kit. Exposure time: 120s.

实验步骤

访问官网浏览详情: www.ablybio.cn