

LAMP1 Rabbit pAb

货号: **AYP24791**

产品信息

反应	Human
宿主	Rabbit
克隆性	Polyclonal
预测反应	
应用	WB IF/ICC
推荐浓度	WB: 1:100 - 1:500 IF/ICC: 1:50 - 1:200
理论分子量	43kDa
实测分子量	90-120KDa
形式	Liquid
保存条件	Store at -20°C. Avoid freeze / thaw cycles. Buffer: PBS with 0.01% thiomersal,50% glycerol,pH7.3.
偶联物	Unconjugated
阳性对照	C2C12,NIH/3T3
细胞定位	
纯化	Affinity purification

抗原信息

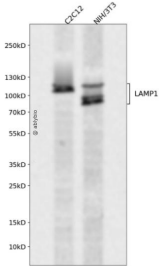
抗原信息	Recombinant protein of mouse LAMP1.
序列	

靶点信息

研究背景	Enables protein domain specific binding activity. Involved in protein stabilization. Located in several cellular components, including cytoplasmic vesicle; sarcolemma; and vacuole. Is expressed in several structures, including 1-cell stage embryo; central nervous system; craniocervical region bone; extraembryonic component; and gut. Orthologous to human LAMP1 (lysosomal associated membrane protein 1).
基因ID	16783

基因名	
Swiss	P11438
别名	P2B; Perk; LGP-A; CD107a; Lamp-1; LGP-120

产品验证



Western blot analysis of LAMP1 expressed in C2C12,NIH/3T3 using LAMP1 Rabbit pAb at 1:1000. Secondary antibody: HRP Goat Anti-Rabbit IgG (H+L) at 1:5000. Lysates/proteins: 30ug per lane. Blocking buffer: 5 % non-fat dry milk in TBST. Detection: ECL Enhanced Kit. Exposure time: 120s.

实验步骤

访问官网浏览详情: www.ablybio.cn