

MKP1 Rabbit pAb

货号: **AYP24783**

产品信息

反应	Mouse
宿主	Rabbit
克隆性	Polyclonal
预测反应	
应用	WB
推荐浓度	WB: 1:500 - 1:1000
理论分子量	39kDa
实测分子量	40KDa
形式	Liquid
保存条件	Store at -20°C. Avoid freeze / thaw cycles. Buffer: PBS with 0.01% thiomersal,50% glycerol,pH7.3.
偶联物	Unconjugated
阳性对照	HeLa,HL-60,Mouse lung,Rat lung,Rat testis
细胞定位	
纯化	Affinity purification

抗原信息

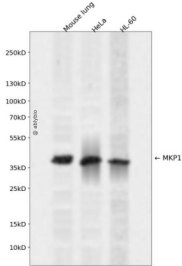
抗原信息	Recombinant protein of mouse MKP1.
序列	

靶点信息

研究背景	Enables mitogen-activated protein kinase binding activity and phosphoprotein phosphatase activity. Involved in negative regulation of MAPK cascade; negative regulation of cell population proliferation; and protein dephosphorylation. Predicted to be active in cytoplasm and nucleus. Is expressed in several structures, including alimentary system; central nervous system; genitourinary system; limb; and sensory organ. Human ortholog(s) of this gene implicated in breast cancer. Orthologous to human DUSP1 (dual specificity phosphatase 1).
基因ID	19252

基因名	
Swiss	P28563
别名	erp; MKP1; mkp-1; 3CH134; Ptpn16

产品验证



Western blot analysis of MKP1 expressed in Mouse lung, HeLa, HL-60 using MKP1 Rabbit pAb at 1:1000. Secondary antibody: HRP Goat Anti-Rabbit IgG (H+L) at 1:5000. Lysates/proteins: 30ug per lane. Blocking buffer: 5% non-fat dry milk in TBST. Detection: ECL Enhanced Kit. Exposure time: 120s.

实验步骤

访问官网浏览详情: www.ablybio.cn