

# ME1 Rabbit pAb

货号: **AYP24652**

## 产品信息

|       |  |
|-------|--|
| 反应    | Human,Mouse,Rat  |
| 宿主    | Rabbit   |
| 克隆性   | Polyclonal   |
| 预测反应  |  |
| 应用    | WB   |
| 推荐浓度  | <b>WB:</b> 1:100 - 1:500   |
| 理论分子量 | 55kDa/64kDa  |
| 实测分子量 | 64KDa  |
| 形式    | Liquid   |
| 保存条件  | Store at -20°C. Avoid freeze / thaw cycles.<br>Buffer: PBS with 0.05% proclin300,50% glycerol,pH7.3. |
| 偶联物   | Unconjugated   |
| 阳性对照  | MCF7   |
| 细胞定位  | Cytoplasm  |
| 纯化    | Affinity purification  |

## 抗原信息

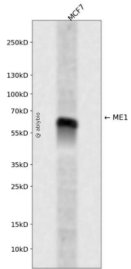
|      |   |
|------|---|
| 抗原信息 | Recombinant protein of human ME1.   |
| 序列   | IQGTASVAVAGLLAALRITKNKLSQDQILFQGAGEAALGIAHLIVMALEKEGLPKEKAIKKIWLVDKGLIVKGRASLTQEKEK<br>FAHEHEEMKNLEAIVQEIKPTALIGVAAIGGAFSEQILKDMAAFNERPIIFALSNPTSKAECSAEQCYKITKGRAIFASGSPFDP<br>VTLPNGQTLYPGQGNNSYVFPGLGVALGVVACGLRQITDNIFLTTAEVIAQQVSDKHLEEGRLYPPLNTIRDVSLKIAEKIVKDA<br>YQEKATATVYPEPQNKEAFVRSQMYSTDYDQILPDCYSWPEEVQKIQTQVDQ |

## 靶点信息

|      |  |
|------|--|
| 研究背景 | This gene encodes a cytosolic, NADP-dependent enzyme that generates NADPH for fatty acid biosynthesis . The activity of this enzyme, the reversible oxidative decarboxylation of malate, links the glycolytic and citric acid cycles. The regulation of expression for this gene is complex. Increased expression can result from elevated levels of thyroid hormones or by higher proportions of carbohydrates in the diet. |
| 基因ID | 4199   |

|       |                 |
|-------|-----------------|
| 基因名   | ME1             |
| Swiss | P48163          |
| 别名    | ME1;HUMNDME;MES |

## 产品验证



Western blot analysis of ME1 expressed in MCF7 using ME1 Rabbit pAb at 1:1000. Secondary antibody: HR P Goat Anti-Rabbit IgG (H+L) at 1:5000. Lysates/proteins: 30ug per lane. Blocking buffer: 5% non-fat dry milk in TBST. Detection: ECL Enhanced Kit. Exposure time: 120s.

## 实验步骤

访问官网浏览详情: [www.ablybio.cn](http://www.ablybio.cn)