

PD-L2/CD273/B7-DC Rabbit pAb

货号: **AYP24639**

产品信息

反应	Mouse,Rat
宿主	Rabbit
克隆性	Polyclonal
预测反应	
应用	WB
推荐浓度	WB: 1:500 - 1:1000
理论分子量	27kDa
实测分子量	45-60KDa
形式	Liquid
保存条件	Store at -20°C. Avoid freeze / thaw cycles. Buffer: PBS with 0.05% proclin300,50% glycerol,pH7.3.
偶联物	Unconjugated
阳性对照	Rat spleen
细胞定位	
纯化	Affinity purification

抗原信息

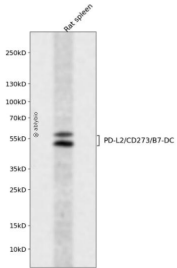
抗原信息	Recombinant protein of mouse PD-L2/CD273/B7-DC.
序列	

靶点信息

研究背景	Acts upstream of or within negative regulation of T cell proliferation and positive regulation of T cell proliferation. Predicted to be located in plasma membrane. Predicted to be integral component of membrane. Predicted to be active in external side of plasma membrane. Is expressed in several structures, including alimentary system epithelium; forebrain; nose; retina; and skin. Orthologous to human PDCD1LG2 (programmed cell death 1 ligand 2).
基因ID	58205

基因名	
Swiss	Q9WUL5
别名	Btdc; B7-DC; PD-L2; F730015O22Rik

产品验证



Western blot analysis of PD-L2/CD273/B7-DC expressed in Rat spleen using PD-L2/CD273/B7-DC Rabbit pAb at 1:1000. Secondary antibody: HRP Goat Anti-Rabbit IgG (H+L) at 1:5000. Lysates/proteins: 30ug per lane. Blocking buffer: 5% non-fat dry milk in TBST. Detection: ECL Enhanced Kit. Exposure time: 120s.

实验步骤

访问官网浏览详情: www.ablybio.cn