

Yipf6 Rabbit pAb

货号: **AYP24522**

产品信息

反应	Rat
宿主	Rabbit
克隆性	Polyclonal
预测反应	
应用	WB
推荐浓度	WB: 1:100 - 1:500
理论分子量	26kDa
实测分子量	26KDa
形式	Liquid
保存条件	Store at -20°C. Avoid freeze / thaw cycles. Buffer: PBS with 0.05% proclin300,50% glycerol,pH7.3.
偶联物	Unconjugated
阳性对照	Rat brain
细胞定位	
纯化	Affinity purification

抗原信息

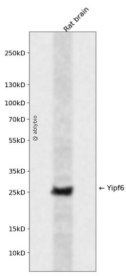
抗原信息	Recombinant protein of mouse Yipf6.
序列	

靶点信息

研究背景	Enables identical protein binding activity. Acts upstream of or within intestinal epithelial cell development . Located in COPII-coated ER to Golgi transport vesicle; cis-Golgi network; and trans-Golgi network. Orthologous to human YIPF6 (Yip1 domain family member 6).
基因ID	77929
基因名	
Swiss	Q8BR70

别名	A430107J06Rik
----	---------------

产品验证



Western blot analysis of Yipf6 expressed in Rat brain using Yipf6 Rabbit pAb at 1:1000. Secondary antibody: HRP Goat Anti-Rabbit IgG (H+L) at 1:5000. Lysates/proteins: 30ug per lane. Blocking buffer: 5% non-fat dry milk in TBST. Detection: ECL Enhanced Kit. Exposure time: 120s.

实验步骤

访问官网浏览详情: www.ablybio.cn