

ATAD3A/ATAD3B Rabbit pAb

货号: **AYP24423**

产品信息

反应	Human,Mouse,Rat
宿主	Rabbit
克隆性	Polyclonal
预测反应	
应用	WB IF/ICC
推荐浓度	WB: 1:500 - 1:1000 IF/ICC: 1:50 - 1:200
理论分子量	19kDa/67kDa/72kDa
实测分子量	68KDa
形式	Liquid
保存条件	Store at -20°C. Avoid freeze / thaw cycles. Buffer: PBS with 0.02% sodium azide,50% glycerol,pH7.3.
偶联物	Unconjugated
阳性对照	HeLa,A-549,U-251MG
细胞定位	Mitochondrion inner membrane,Peripheral membrane protein
纯化	Affinity purification

抗原信息

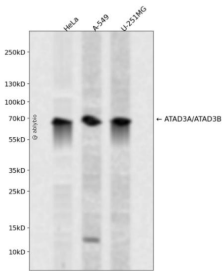
抗原信息	Recombinant fusion protein containing a sequence corresponding to amino acids 1-240 of human ATAD3 B (NP_114127.3).
序列	MSWLFVNGKPGKGEAGPPPLPPAQPGAEGGGDRGLGDRPAPKDKWSNFDPTGLERAAKAARELEHSRYAKEALNLA QMQEQLQLEQQSKLKEYEAAVEQLKSEQIRAQAEERRKTLSEETRQHQARAQYQDKLARQRYEDQLKQQQLLNEENLR KQEEVQKQEAMRRATVEREMELRHKNEMLRVETEARARAKAERENADIIREQIRLKASEHRQTVLESIRTAGTLFGEGFRA F

靶点信息

研究背景	The protein encoded by this gene is localized to the mitochondrial inner membrane, where it can bind to a highly-related protein, ATAD3A. ATAD3A appears to interact with matrix nucleoid complexes, and the encoded protein negatively regulates that interaction. This gene is expressed almost exclusively in pluripotent embryonic stem cells and some cancer cells. Two transcript variants encoding different isoforms have been found for this gene.
------	---

基因ID	83858
基因名	ATAD3B
Swiss	Q5T9A4
别名	ATAD3B;AAA-TOB3;TOB3;ATPase family

产品验证



Western blot analysis of ATAD3A/ATAD3B expressed in HeLa, A-549, U-251MG using ATAD3A/ATAD3B Rabbit pAb at 1:1000. Secondary antibody: HRP Goat Anti-Rabbit IgG (H+L) at 1:5000. Lysates/proteins: 30ug per lane. Blocking buffer: 5% non-fat dry milk in TBST. Detection: ECL Enhanced Kit. Exposure time: 120s.

实验步骤

访问官网浏览详情: www.ablybio.cn