

# Tamm Horsfall Glycoprotein Rabbit pAb

货号: **AYP24258**

## 产品信息

反应	Human,Mouse,Rat
宿主	Rabbit
克隆性	Polyclonal
预测反应	
应用	WB IF/ICC
推荐浓度	<b>WB:</b> 1:100 - 1:500 <b>IF/ICC:</b> 1:50 - 1:200
理论分子量	55kDa/66kDa/67kDa/69kDa/73kDa
实测分子量	105-120KDa
形式	Liquid
保存条件	Store at -20°C. Avoid freeze / thaw cycles. Buffer: PBS with 0.05% proclin300,50% glycerol,pH7.3.
偶联物	Unconjugated
阳性对照	Mouse kidney
细胞定位	apical plasma membrane,basolateral plasma membrane,cell surface,ciliary membrane,cilium,endoplasmic reticulum,extracellular exosome,extracellular space,Golgi lumen,spindle pole
纯化	Affinity purification

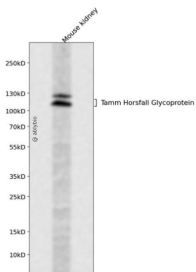
## 抗原信息

抗原信息	Recombinant protein of human Tamm Horsfall Glycoprotein.
序列	

## 靶点信息

研究背景	The protein encoded by this gene is the most abundant protein in mammalian urine under physiological conditions. Its excretion in urine follows proteolytic cleavage of the ectodomain of its glycosyl phosphatidyl inositol-anchored counterpart that is situated on the luminal cell surface of the loop of Henle. This protein may act as a constitutive inhibitor of calcium crystallization in renal fluids. Excretion of this protein in urine may provide defense against urinary tract infections caused by uropathogenic bacteria. Defects in this gene are associated with the renal disorders medullary cystic kidney disease-2 (MCKD2), glomerulocystic kidney disease with hyperuricemia and isosthenuria (GCKDHI), and familial juvenile hyperuricemic nephropathy (FJHN). Alternative splicing of this gene results in multiple transcript variants.
基因ID	7369
基因名	UMOD
Swiss	P07911
别名	UMOD;ADMCKD2;FJHN;HNFJ;HNFJ1;MCKD2;THGP;THP

## 产品验证



Western blot analysis of Tamm Horsfall Glycoprotein expressed in Mouse kidney using Tamm Horsfall Glycoprotein Rabbit pAb at 1:1000. Secondary antibody: HRP Goat Anti-Rabbit IgG (H+L) at 1:5000. Lysates/proteins: 30ug per lane. Blocking buffer: 5% non-fat dry milk in TBST. Detection: ECL Enhanced Kit. Exposure time: 120s.

## 实验步骤

访问官网浏览详情: [www.ablybio.cn](http://www.ablybio.cn)