

NG2/CSPG4 Rabbit pAb

货号: AYP24253

产品信息

反应	Human,Mouse,Rat
宿主	Rabbit
克隆性	Polyclonal
预测反应	
应用	WB
推荐浓度	WB: 1:500 - 1:1000
理论分子量	252kDa
实测分子量	270-300KDa
形式	Liquid
保存条件	Store at -20°C. Avoid freeze / thaw cycles. Buffer: PBS with 0.05% proclin300,50% glycerol,pH7.3.
偶联物	Unconjugated
阳性对照	A375,Mouse lung
细胞定位	apical plasma membrane,cell projection,cell surface,lamellipodium membrane,nucleoplasm,plasma membrane
纯化	Affinity purification

抗原信息

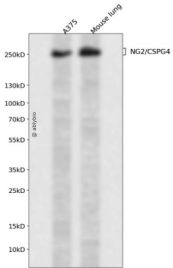
抗原信息	Recombinant protein of human NG2/CSPG4.
序列	

靶点信息

研究背景	Enables coreceptor activity. Acts upstream of or within several processes, including platelet-derived growth factor receptor signaling pathway; positive regulation of MAPK cascade; and ruffle assembly. Located in plasma membrane and ruffle. Is expressed in several structures, including brain; jaw; respiratory system; retina; and skeleton. Human ortholog(s) of this gene implicated in relapsing-remitting multiple sclerosis. Orthologous to human CSPG4 (chondroitin sulfate proteoglycan 4).
基因ID	121021

基因名	
Swiss	Q8VHY0
别名	AN2; NG2; Cspg4a; 4732461B14Rik

产品验证



Western blot analysis of NG2/CSPG4 expressed in A375, Mouse lung using NG2/CSPG4 Rabbit pAb at 1:1000. Secondary antibody: HRP Goat Anti-Rabbit IgG (H+L) at 1:5000. Lysates/proteins: 30ug per lane. Blocking buffer: 5% non-fat dry milk in TBST. Detection: ECL Enhanced Kit. Exposure time: 120s.

实验步骤

访问官网浏览详情: www.ablybio.cn