

# Human CALCA/Procalcitonin Rabbit pAb

货号: AYP24247

## 产品信息

反应	Human,Mouse,Rat
宿主	Rabbit
克隆性	Polyclonal
预测反应	
应用	WB
推荐浓度	<b>WB:</b> 1:100 - 1:500
理论分子量	13kDa/15kDa
实测分子量	15KDa
形式	Liquid
保存条件	Store at -20°C. Avoid freeze / thaw cycles. Buffer: PBS with 0.05% proclin300,50% glycerol,pH7.3.
偶联物	Unconjugated
阳性对照	Rat lung
细胞定位	extracellular region,extracellular space,hippocampal mossy fiber to CA3 synapse,neuronal dense core vesicle,nucleus,terminal bouton
纯化	Affinity purification

## 抗原信息

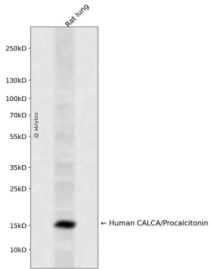
抗原信息	Recombinant protein of human CALCA/Procalcitonin.
序列	

## 靶点信息

研究背景	This gene encodes the peptide hormones calcitonin, calcitonin gene-related peptide and katacalcin by tissue-specific alternative RNA splicing of the gene transcripts and cleavage of inactive precursor proteins. Calcitonin is involved in calcium regulation and acts to regulate phosphorus metabolism. Calcitonin gene-related peptide functions as a vasodilator and as an antimicrobial peptide while katacalcin is a calcium-lowering peptide. Multiple transcript variants encoding different isoforms have been found for this gene.
基因ID	796

基因名	CALCA
Swiss	P01258
别名	CALCA;CALC1;CGRP;CGRP-I;CGRP1;CT;KC;PCT

## 产品验证



Western blot analysis of Human CALCA/Procalcitonin expressed in Rat lung using Human CALCA/Procalcitonin Rabbit pAb at 1:1000. Secondary antibody: HRP Goat Anti-Rabbit IgG (H+L) at 1:5000. Lysates/proteins: 30ug per lane. Blocking buffer: 5% non-fat dry milk in TBST. Detection: ECL Enhanced Kit. Exposure time: 120s.

## 实验步骤

访问官网浏览详情: [www.ablybio.cn](http://www.ablybio.cn)