

ASC/TMS1 Rabbit pAb

货号: **AYP24244**

产品信息

反应	Human,Mouse,Rat
宿主	Rabbit
克隆性	Polyclonal
预测反应	
应用	WB
推荐浓度	WB: 1:500 - 1:1000
理论分子量	21kDa
实测分子量	25KDa
形式	Liquid
保存条件	Store at -20°C. Avoid freeze / thaw cycles. Buffer: PBS with 0.05% proclin300,50% glycerol,pH7.3.
偶联物	Unconjugated
阳性对照	HL-60,THP-1,Jurkat(negative),Mouse spleen,Rat spleen,Rat lung
细胞定位	AIM2 inflammasome complex,cytoplasm,cytosol,endoplasmic reticulum,extracellular region,IkappaB kinase complex,inflammasome complex,mitochondrion,NLRP1 inflammasome complex,NLRP3 inflammasome complex,NLRP6 inflammasome complex,nucleolus,nucleoplasm,nucleus
纯化	Affinity purification

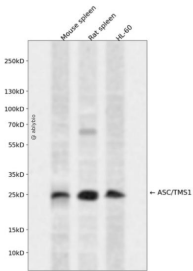
抗原信息

抗原信息	Recombinant protein of Mouse ASC/TMS1.
序列	

靶点信息

研究背景	Functions as key mediator in apoptosis and inflammation. Promotes caspase-mediated apoptosis involving predominantly caspase-8 and also caspase-9 in a probable cell type-specific manner. Involved in activation of the mitochondrial apoptotic pathway, promotes caspase-8-dependent proteolytic maturation of BID independently of FADD in certain cell types and also mediates mitochondrial translocation of BAX and activates BAX-dependent apoptosis coupled to activation of caspase-9, -2 and -3. Involved in macrophage pyroptosis, a caspase-1-dependent inflammatory form of cell death and is the major constituent of the ASC pyroptosome which forms upon potassium depletion and rapidly recruits and activates caspase-1. In innate immune response believed to act as an integral adapter in the assembly of the inflammasome which activates caspase-1 leading to processing and secretion of proinflammatory cytokines. The function as activating adapter in different types of inflammasomes is mediated by the pyrin and CARD domains and their homotypic interactions.
基因ID	66824
基因名	
Swiss	Q9EPB4
别名	A; Asc; TMS-; TNS1; masc; CARD5; TMS-1; 9130417A21Rik

产品验证



Western blot analysis of ASC/TMS1 expressed in Mouse spleen, Rat spleen, HL-60 using ASC/TMS1 Rabbit pAb at 1:1000. Secondary antibody: HRP Goat Anti-Rabbit IgG (H+L) at 1:5000. Lysates/proteins: 30ug per lane. Blocking buffer: 5% non-fat dry milk in TBST. Detection: ECL Enhanced Kit. Exposure time: 120s.

实验步骤

访问官网浏览详情: www.ablybio.cn