

G6PD Rabbit pAb

货号: **AYP24055**

产品信息

反应	Human,Rat
宿主	Rabbit
克隆性	Polyclonal
预测反应	
应用	WB
推荐浓度	WB: 1:100 - 1:500
理论分子量	59kDa/62kDa/63kDa
实测分子量	59KDa
形式	Liquid
保存条件	Store at -20°C. Avoid freeze / thaw cycles. Buffer: PBS with 0.05% proclin300,50% glycerol,pH7.3.
偶联物	Unconjugated
阳性对照	HeLa,MCF7,C6
细胞定位	cytoplasm,cytoplasmic side of plasma membrane,cytosol,extracellular exosome,nucleus
纯化	Affinity purification

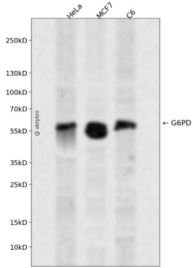
抗原信息

抗原信息	Recombinant fusion protein containing a sequence corresponding to amino acids 195-515 of human G6PD (NP_001035810.1).
序列	QIYRIDHYLGKEMVQNLMLVLRFANRIFGPIWNRDNIACVILTFKEPFGTEGRGGYFDEFGIIRDVMQNHLLQMLCLVAMEKP ASTNSDDVRDEKVKVLKCISEVQANNVVLGQYVGNPDGEGEATKGYLDDPTVPRGSTTATFAAVVLYVENERWDGVPFI LRCGKALNERKAEVRLQFHDVAGDIFHQCKRNELVIRVQPNEAVYTKMMTKKPGMFFNPEESELDTYGNRYKNVKLPD AYERLILDVFCGSQMHFVRSDELREAWRIFTPLLHQIELEKPKIPYIYGSRGPTAEDELMKRVGFQYEGTYKWWNPHKL

靶点信息

研究背景	This gene encodes glucose-6-phosphate dehydrogenase. This protein is a cytosolic enzyme encoded by a housekeeping X-linked gene whose main function is to produce NADPH, a key electron donor in the defense against oxidizing agents and in reductive biosynthetic reactions. G6PD is remarkable for its genetic diversity. Many variants of G6PD, mostly produced from missense mutations, have been described with wide ranging levels of enzyme activity and associated clinical symptoms. G6PD deficiency may cause neonatal jaundice, acute hemolysis, or severe chronic non-spherocytic hemolytic anemia. Two transcript variants encoding different isoforms have been found for this gene.
基因ID	2539
基因名	G6PD
Swiss	P11413
别名	G6PD;G6PD1

产品验证



Western blot analysis of G6PD expressed in HeLa, MCF7, C6 using G6PD Rabbit pAb at 1:1000. Secondary antibody: HRP Goat Anti-Rabbit IgG (H+L) at 1:5000. Lysates/proteins: 30ug per lane. Blocking buffer: 5% non-fat dry milk in TBST. Detection: ECL Enhanced Kit. Exposure time: 120s.

实验步骤

访问官网浏览详情: www.ablybio.cn