

WTAP Rabbit pAb

货号: **AYP23842**

产品信息

反应	Human,Mouse,Rat
宿主	Rabbit
克隆性	Polyclonal
预测反应	
应用	WB IF/ICC
推荐浓度	WB: 1:100 - 1:500 IF/ICC: 1:50 - 1:200
理论分子量	17kDa/44kDa
实测分子量	55KDa
形式	Liquid
保存条件	Store at -20°C. Avoid freeze / thaw cycles. Buffer: PBS with 0.05% proclin300,50% glycerol,pH7.3.
偶联物	Unconjugated
阳性对照	RAW264.7
细胞定位	cytoplasm,nuclear membrane,nuclear speck,nucleoplasm,nucleus
纯化	Affinity purification

抗原信息

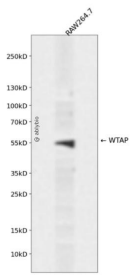
抗原信息	Recombinant fusion protein containing a sequence corresponding to amino acids 212-355 of human WTAP (NP_004897.2).
序列	DEEVEGMQSTILVLQQLKETRQQLAQYQQQSQASAPSTSRRTTASEPVEQSEATSKDCSRLTNGPSNGSSSRQRTSGSGFHREGNTTEDDFPSSPGNGNKSSNSSEERTGRGGSGYVNLQLSAGYESVDSPTGSENSLTHQSND

靶点信息

研究背景	The Wilms tumor suppressor gene WT1 appears to play a role in both transcriptional and posttranscriptional regulation of certain cellular genes. This gene encodes a WT1-associating protein, which is a ubiquitously expressed nuclear protein. Like WT1 protein, this protein is localized throughout the nucleoplasm as well as in speckles and partially colocalizes with splicing factors. Alternative splicing of this gene results in several transcript variants encoding three different isoforms.
------	---

基因ID	9589
基因名	WTAP
Swiss	Q15007
别名	WTAP;Mum2

产品验证



Western blot analysis of WTAP expressed in RAW264.7 using WTAP Rabbit pAb at 1:1000. Secondary antibody: HRP Goat Anti-Rabbit IgG (H+L) at 1:5000. Lysates/proteins: 30ug per lane. Blocking buffer: 5% non-fat dry milk in TBST. Detection: ECL Enhanced Kit. Exposure time: 120s.

实验步骤

访问官网浏览详情: www.ablybio.cn