

TLK1 Rabbit pAb

货号: **AYP23822**

产品信息

反应	Human,Mouse,Rat
宿主	Rabbit
克隆性	Polyclonal
预测反应	
应用	WB
推荐浓度	WB: 1:500 - 1:1000
理论分子量	63kDa/77kDa/81kDa/86kDa/89kDa
实测分子量	87KDa
形式	Liquid
保存条件	Store at -20°C. Avoid freeze / thaw cycles. Buffer: PBS with 0.05% proclin300,50% glycerol,pH7.3.
偶联物	Unconjugated
阳性对照	HeLa,Jurkat,NIH/3T3
细胞定位	Nucleus
纯化	Affinity purification

抗原信息

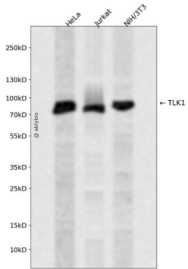
抗原信息	A synthetic peptide corresponding to a sequence within amino acids 150-250 of human TLK1 (NP_036422.3).
序列	FEYQGGNGSSPVRGIPPAIRSPQNSHSHSTPSSSVRPNSPPTALAFGDHPVQPKQLSFKIIQTDLTMLKLALESNKIQDL EKKEGRIDLLLRANCDLR

靶点信息

研究背景	The protein encoded by this gene is a serine/threonine kinase that may be involved in the regulation of chromatin assembly. The encoded protein is only active when it is phosphorylated, and this phosphorylation is cell cycle-dependent, with the maximal activity of this protein coming during S phase. The catalytic activity of this protein is diminished by DNA damage and by blockage of DNA replication. Three transcript variants encoding different isoforms have been found for this gene.
基因ID	9874

基因名	TLK1
Swiss	Q9UKI8
别名	TLK1;PKU-beta

产品验证



Western blot analysis of TLK1 expressed in HeLa, Jurkat, NIH/3T3 using TLK1 Rabbit pAb at 1:1000. Secondary antibody: HRP Goat Anti-Rabbit IgG (H+L) at 1:5000. Lysates/proteins: 30ug per lane. Blocking buffer: 5% non-fat dry milk in TBST. Detection: ECL Enhanced Kit. Exposure time: 120s.

实验步骤

访问官网浏览详情: www.ablybio.cn