

FLC Rabbit pAb

货号: **AYP23801**

产品信息

反应	Arabidopsis thaliana
宿主	Rabbit
克隆性	Polyclonal
预测反应	
应用	WB
推荐浓度	WB: 1:100 - 1:500
理论分子量	21kDa
实测分子量	22KDa
形式	Liquid
保存条件	Store at -20°C. Avoid freeze / thaw cycles. Buffer: PBS with 0.05% proclin300,50% glycerol,pH7.3.
偶联物	Unconjugated
阳性对照	Seedling,Inflorescences,Before inflorescence,Rosette leaf
细胞定位	nucleus
纯化	Affinity purification

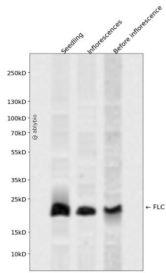
抗原信息

抗原信息	Recombinant fusion protein containing a sequence corresponding to amino acids 60-196 of arabidopsis thaliana FLC (NP_196576.1).
序列	GDNLVKILDTRYGKQHADDLKALDHQSKALNYGSHYELLELVDSKLVGSNVKNV SIDALVQLEEHLLETALSVTRAKKTEML KLVENLKEKEKMLKEENQVLASQMNHHVGAEMEMSPAGQISDNLPVTLPLLN

靶点信息

研究背景	MADS-box protein encoded by FLOWERING LOCUS C - transcription factor that functions as a repressor of floral transition and contributes to temperature compensation of the circadian clock. Expression is downregulated during cold treatment. Vernalization, FRI and the autonomous pathway all influence the state of FLC chromatin. Both maternal and paternal alleles are reset by vernalization, but their earliest activation differs in timing and location. Histone H3 trimethylation at lysine 4 and histone acetylation are associated with active FLC expression, whereas histone deacetylation and histone H3 dimethylation at lysines 9 and 27 are involved in FLC repression. Expression is also repressed by two small RNAs (30- and 24-nt) complementary to the FLC sense strand 3' to the polyA site. The small RNAs are most likely derived from an antisense transcript of FLC. Interacts with SOC1 and FT chromatin in vivo. Member of a protein complex.
基因ID	830878
基因名	
Swiss	Q9S7Q7
别名	AGAMOUS-like 25; AGL25; FLF; FLOWERING LOCUS C; FLOWERING LOCUS F; MADS BOX PROTEIN FLOWERING LOCUS F; REDUCED STEM BRANCHING 6; RSB6; T31P16.130; T31P16_130

产品验证



Western blot analysis of FLC expressed in Seedling, Inflorescences, Before inflorescence using FLC Rabbit pAb at 1:1000. Secondary antibody: HRP Goat Anti-Rabbit IgG (H+L) at 1:5000. Lysates/proteins: 30ug per lane. Blocking buffer: 5% non-fat dry milk in TBST. Detection: ECL Enhanced Kit. Exposure time: 120s.

实验步骤

访问官网浏览详情: www.ablybio.cn