

# DREB1B Rabbit pAb

货号: AYP23800

## 产品信息

反应	Arabidopsis thaliana
宿主	Rabbit
克隆性	Polyclonal
预测反应	
应用	WB
推荐浓度	<b>WB:</b> 1:500 - 1:1000
理论分子量	23kDa
实测分子量	25KDa
形式	Liquid
保存条件	Store at -20°C. Avoid freeze / thaw cycles. Buffer: PBS with 0.05% proclin300,50% glycerol,pH7.3.
偶联物	Unconjugated
阳性对照	Seedling,Inflorescences
细胞定位	nucleus
纯化	Affinity purification

## 抗原信息

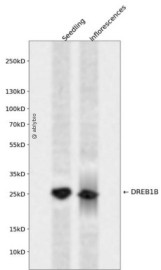
抗原信息	A synthetic peptide corresponding to a sequence within amino acids 50-150 of arabidopsis thaliana DREB 1B (NP_567721.1).
序列	GVRQRNSGKWVSEVREPNKKTRIWLGTFTQAEMAARAHDAALALRGRSACLNFADSAWRLRIPESTCAKDIQKAAAEA ALAFQDETCDTTTTNHGLDMEE

## 靶点信息

研究背景	Transcriptional activator that binds to the DRE/CRT regulatory element and induces COR (cold-regulated) gene expression increasing plant freezing tolerance. It encodes a member of the DREB subfamily A-1 of ERF/AP2 transcription factor family (CBF1). The protein contains one AP2 domain. There are six members in this subfamily, including CBF1, CBF2, and CBF3. This gene is involved in response to low temperature and abscisic acid.
基因ID	828653

基因名	
Swiss	P93835
别名	ATCBF1; C-repeat/DRE binding factor 1; DRE BINDING PROTEIN 1B; DREB1B; T30C3.11; TRANSCRIPTIONAL ACTIVATOR CBF1

## 产品验证



Western blot analysis of DREB1B expressed in Seedling, Inflorescences using DREB1B Rabbit pAb at 1:1000. Secondary antibody: HRP Goat Anti-Rabbit IgG (H+L) at 1:5000. Lysates/proteins: 30ug per lane. Blocking buffer: 5% non-fat dry milk in TBST. Detection: ECL Enhanced Kit. Exposure time: 120s.

## 实验步骤

访问官网浏览详情: [www.ablybio.cn](http://www.ablybio.cn)