

# TIFY10A Rabbit pAb

货号: **AYP23799**

## 产品信息

反应	Arabidopsis thaliana
宿主	Rabbit
克隆性	Polyclonal
预测反应	
应用	WB
推荐浓度	<b>WB:</b> 1:500 - 1:1000
理论分子量	27kDa
实测分子量	32KDa
形式	Liquid
保存条件	Store at -20°C. Avoid freeze / thaw cycles. Buffer: PBS with 0.05% proclin300,50% glycerol,pH7.3.
偶联物	Unconjugated
阳性对照	Rosette leaf
细胞定位	nucleus,plasma membrane
纯化	Affinity purification

## 抗原信息

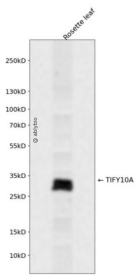
抗原信息	A synthetic peptide corresponding to a sequence within amino acids 154-253 of arabidopsis thaliana TIFY 10A (NP_564075.1).
序列	SKGTANSLAKNQTDIRSNIATIANQVPHPRKTTTQEPIQSSPTPLTELPIARRASLHRFLEKRKDRVTSKAPYQLCDPAKASS NPQTTGNMSWLGLAAEI

## 靶点信息

研究背景	JAZ1 is a nuclear-localized protein involved in jasmonate signaling. JAZ1 transcript levels rise in response to a jasmonate stimulus. JAZ1 can interact with the CO1 F-box subunit of an SCF E3 ubiquitin ligase in a yeast-two-hybrid assay only in the presence of jasmonate-isoleucine (JA-ILE) or coronatine. Application of jasmonate methyl ester to Arabidopsis roots reduces the levels of a JAZ1:GUS fusion protein, presumably by stimulating ubiquitin-proteasome-mediated degradation. The Jas domain appears to be important for JAZ1-CO1 interactions in the presence of coronatine. Two positive residues (R205 and R206) in the Jas domain shown to be important for coronatine -dependent CO1 binding are not required for binding AtMYC2.
------	---

基因ID	838501
基因名	
Swiss	Q9LMA8
别名	AtJAZ1; jasmonate-zim-domain protein 1; T29M8.5; T29M8_5; TIFY10A

## 产品验证



Western blot analysis of TIFY10A expressed in Rosette leaf using TIFY10A Rabbit pAb at 1:1000. Secondary antibody: HRP Goat Anti-Rabbit IgG (H+L) at 1:5000. Lysates/proteins: 30ug per lane. Blocking buffer: 5 % non-fat dry milk in TBST. Detection: ECL Enhanced Kit. Exposure time: 120s.

## 实验步骤

访问官网浏览详情: [www.ablybio.cn](http://www.ablybio.cn)