

B4GALT1 Rabbit pAb

货号: AYP23746

产品信息

反应	Human
宿主	Rabbit
克隆性	Polyclonal
预测反应	
应用	WB
推荐浓度	WB: 1:500 - 1:2000
理论分子量	42kDa/43kDa
实测分子量	42kDa/43kDa
形式	Liquid
保存条件	Store at -20°C. Avoid freeze / thaw cycles. Buffer: PBS with 0.02% sodium azide,50% glycerol,pH7.3.
偶联物	Unconjugated
阳性对照	
细胞定位	Cell membrane,Cell projection,Cell surface,Golgi apparatus,Golgi stack membrane,Secreted,Single-pass type II membrane protein,filopodium
纯化	Affinity purification

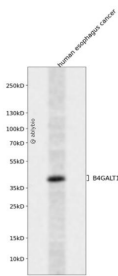
抗原信息

抗原信息	Recombinant fusion protein containing a sequence corresponding to amino acids 50-215 of human B4GALT1 (NP_001488.2).
序列	LPQLVGVSTPLQGGNSAAAIGQSSGELRTGGARPPPLGASSQPRPGDSSPVVDSGPGPASNLTSVPVPHTTALSLPACPEESPLLVGPMLEFNMPVDLELVAKQNPVKMGGRYAPRDCVSPHKVAIIIPFRNRQEHKYLWLYLHPVLQRQQLDYGIYVIN

靶点信息

研究背景	This gene is one of seven beta-1,4-galactosyltransferase (beta4GalT) genes. They encode type II membrane-bound glycoproteins that appear to have exclusive specificity for the donor substrate UDP-galactose; a II transfer galactose in a beta1,4 linkage to similar acceptor sugars: GlcNAc, Glc, and Xyl. Each beta4GalT has a distinct function in the biosynthesis of different glycoconjugates and saccharide structures. As type II membrane proteins, they have an N-terminal hydrophobic signal sequence that directs the protein to the Golgi apparatus and which then remains uncleaved to function as a transmembrane anchor. By sequence similarity, the beta4GalTs form four groups: beta4GalT1 and beta4GalT2, beta4GalT3 and beta4GalT4, beta4GalT5 and beta4GalT6, and beta4GalT7. This gene is unique among the beta4GalT genes because it encodes an enzyme that participates both in glycoconjugate and lactose biosynthesis. For the first activity, the enzyme adds galactose to N-acetylglucosamine residues that are either monosaccharides or the non-reducing ends of glycoprotein carbohydrate chains. The second activity is restricted to lactating mammary tissues where the enzyme forms a heterodimer with alpha-lactalbumin to catalyze UDP-galactose + D-glucose UDP + lactose. The two enzymatic forms result from alternate transcription initiation sites and post-translational processing. Two transcripts, which differ only at the 5' end, with approximate lengths of 4.1 kb and 3.9 kb encode the same protein. The longer transcript encodes the type II membrane-bound, trans-Golgi resident protein involved in glycoconjugate biosynthesis. The shorter transcript encodes a protein which is cleaved to form the soluble lactose synthase.
基因ID	2683
基因名	B4GALT1
Swiss	P15291
别名	B4GALT1; B4GAL-T1; CDG2D; GGTB2; GT1; GTB; beta4Gal-T1; beta-1;4-galactosyltransferase 1

产品验证



Western blot analysis of B4GALT1 expressed in human esophagus cancer using B4GALT1 Rabbit pAb at 1:1000. Secondary antibody: HRP Goat Anti-Rabbit IgG (H+L) at 1:5000. Lysates/proteins: 30ug per lane. Blocking buffer: 5% non-fat dry milk in TBST. Detection: ECL Enhanced Kit. Exposure time: 120s.

实验步骤

访问官网浏览详情: www.ablybio.cn