

# NG2/CSPG4 Rabbit pAb

货号: AYP23729

## 产品信息

反应	Human,Mouse
宿主	Rabbit
克隆性	Polyclonal
预测反应	
应用	WB IHC IF/ICC
推荐浓度	<b>WB:</b> 1:500 - 1:2000 <b>IHC:</b> 1:50 - 1:200 <b>IF/ICC:</b> 1:50 - 1:200
理论分子量	250kDa
实测分子量	250kDa
形式	Liquid
保存条件	Store at -20°C. Avoid freeze / thaw cycles. Buffer: PBS with 0.01% thiomersal,50% glycerol,pH7.3.
偶联物	Unconjugated
阳性对照	
细胞定位	Apical cell membrane,Cell projection,Extracellular side,Single-pass type I membrane protein,lamellipodium membrane
纯化	Affinity purification

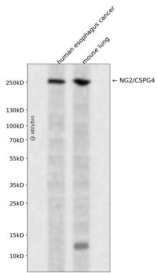
## 抗原信息

抗原信息	Recombinant fusion protein containing a sequence corresponding to amino acids 1950-2210 of human NG2/CSPG4 (NP_001888.2).
序列	LEVPQALGRSSLSQQQLRVVSDREEPEAAAYRLIQGPQYGHLLVGGRRPTSAFSQFQIDQGEVVFAFTNFSSSHDHFRVLAL ARGVNASAVVNVTVRALLHVWAGGPWPQGATLRLDPTVLDAGELANRTGSVPRFRLLLEGPRHGRVVRVPRARTEPGGS QLVEQFTQDLEDGRLGLEVGRPEGRAPGPAGDSLTLLELWAQGVPPAVASLDFATEPYNAARPYSVALLSVPEAARTEAG KPESSTPTGEPGPMASPEPAVA

## 靶点信息

研究背景	A human melanoma-associated chondroitin sulfate proteoglycan plays a role in stabilizing cell-substratum interactions during early events of melanoma cell spreading on endothelial basement membranes. CSPG4 represents an integral membrane chondroitin sulfate proteoglycan expressed by human malignant melanoma cells.
基因ID	1464
基因名	CSPG4
Swiss	Q6UVK1
别名	CSPG4; HMW-MAA; MCSP; MCSPG; MEL-CSPG; MSK16; NG2; chondroitin sulfate proteoglycan 4

## 产品验证



Western blot analysis of NG2/CSPG4 expressed in human esophagus cancer, mouse lung using NG2/CSPG4 Rabbit pAb at 1:1000. Secondary antibody: HRP Goat Anti-Rabbit IgG (H+L) at 1:5000. Lysates/proteins: 30ug per lane. Blocking buffer: 5% non-fat dry milk in TBST. Detection: ECL Enhanced Kit. Exposure time: 120s.

## 实验步骤

访问官网浏览详情: [www.ablybio.cn](http://www.ablybio.cn)