

# GPLD1 Rabbit pAb

货号: **AYP23709**

## 产品信息

反应	Human
宿主	Rabbit
克隆性	Polyclonal
预测反应	
应用	<a href="#">WB</a>
推荐浓度	<b>WB:</b> 1:100 - 1:500
理论分子量	19kDa/92kDa
实测分子量	92KDa
形式	Liquid
保存条件	Store at -20°C. Avoid freeze / thaw cycles. Buffer: PBS with 0.05% proclin300,50% glycerol,pH7.3.
偶联物	Unconjugated
阳性对照	293T,Daudi
细胞定位	Secreted
纯化	Affinity purification

## 抗原信息

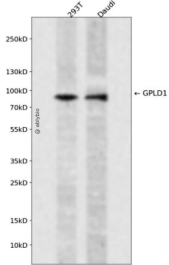
抗原信息	Recombinant fusion protein containing a sequence corresponding to amino acids 24-160 of human GPLD1 (NP_001494.2).
序列	CGLSTHVEIGHRALEFLQLHNQVNYRELLLEHQDAYQAGIVFPDCFYPSICKGGKFHDVSESTHWTPFLNASVHYIRENYP LPWEKDTEKLVAFLEFGITSHMAADVSWHSLGLEQGLRTMGALDFHGSYSEAHSA

## 靶点信息

研究背景	Many proteins are tethered to the extracellular face of eukaryotic plasma membranes by a glycosylphosphatidylinositol (GPI) anchor. The GPI-anchor is a glycolipid found on many blood cells. The protein encoded by this gene is a GPI degrading enzyme. Glycosylphosphatidylinositol specific phospholipase D1 hydrolyzes the inositol phosphate linkage in proteins anchored by phosphatidylinositol glycans, thereby releasing the attached protein from the plasma membrane.
基因ID	2822

基因名	GPLD1
Swiss	P80108
别名	GPLD1; GPIPLD; GPIPLDM; PIGPLD; PIGPLD1; PLD; phosphatidylinositol-glycan-specific phospholipase D

## 产品验证



Western blot analysis of GPLD1 expressed in 293T, Daudi using GPLD1 Rabbit pAb at 1:1000. Secondary antibody: HRP Goat Anti-Rabbit IgG (H+L) at 1:5000. Lysates/proteins: 30ug per lane. Blocking buffer: 5% non-fat dry milk in TBST. Detection: ECL Enhanced Kit. Exposure time: 120s.

## 实验步骤

访问官网浏览详情: [www.ablybio.cn](http://www.ablybio.cn)