

TET1 Rabbit pAb

货号: **AYP23698**

产品信息

反应	Human
宿主	Rabbit
克隆性	Polyclonal
预测反应	
应用	WB
推荐浓度	WB: 1:500 - 1:1000
理论分子量	219kDa
实测分子量	219kDa
形式	Liquid
保存条件	Store at -20°C. Avoid freeze / thaw cycles. Buffer: PBS with 0.05% proclin300,50% glycerol,pH7.3.
偶联物	Unconjugated
阳性对照	
细胞定位	nucleoplasm,nucleus
纯化	Affinity purification

抗原信息

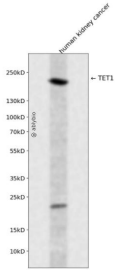
抗原信息	Recombinant fusion protein containing a sequence corresponding to amino acids 820-978 of mouse TET1 (NP_081660.1).
序列	GAEPTIFNNHPNTHSAGSRPHPEKVPNKEPKDGSVPQPSLLSLMKDRRLTLEQVVAIEALTQLSEAPSESSSPSKPEKDEE AHQKTASLLNSCKAILHSVRKDLQDPNVQKGLHHDTVVFNGQNRFTKSPDSFATNQALIKSQGYSSPTAEKKGAA

靶点信息

研究背景	Enables methylcytosine dioxygenase activity. Involved in several processes, including dendrite morphogenesis; inner cell mass cell differentiation; and protein O-linked glycosylation. Acts upstream of or within DNA demethylation; regulation of DNA methylation; and regulation of genetic imprinting. Located in nucleus. Is expressed in several structures, including brain; early conceptus; embryo ectoderm; lower urogenital tract; and reproductive system. Orthologous to human TET1 (tet methylcytosine dioxygenase 1).
基因ID	52463

基因名	
Swiss	Q3URK3
别名	LCX; Cxxc6; AA517754; BB001228; D10Erttd17; mKIAA1676; D10Erttd17e; 2510010B09Rik

产品验证



Western blot analysis of TET1 expressed in human kidney cancer using TET1 Rabbit pAb at 1:1000. Secondary antibody: HRP Goat Anti-Rabbit IgG (H+L) at 1:5000. Lysates/proteins: 30ug per lane. Blocking buffer: 5% non-fat dry milk in TBST. Detection: ECL Enhanced Kit. Exposure time: 120s.

实验步骤

访问官网浏览详情: www.ablybio.cn