

# MCU Rabbit pAb

货号: **AYP23688**

## 产品信息

反应	Human
宿主	Rabbit
克隆性	Polyclonal
预测反应	
应用	WB
推荐浓度	<b>WB:</b> 1:1000 - 1:5000
理论分子量	35kDa/36kDa/39kDa
实测分子量	35KDa
形式	Liquid
保存条件	Store at -20°C. Avoid freeze / thaw cycles. Buffer: PBS with 0.05% proclin300,50% glycerol,pH7.3.
偶联物	Unconjugated
阳性对照	Mouse spleen
细胞定位	mitochondrial inner membrane,mitochondrion
纯化	Affinity purification

## 抗原信息

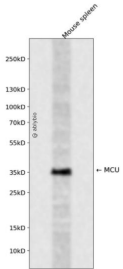
抗原信息	Recombinant fusion protein containing a sequence corresponding to amino acids 51-170 of human MCU ( NP_612366.1).
序列	VHQRIASWQNLGAVYCSTVVPSSDDVTVVYQNGLPVISVRLPSRRERCQFTLKPISDSVGVFLRQLQEEDRGIDRVAIYSPD GVRVAASTGIDLLLLDDFKLVINDLTYHVRPPKRDLLSH

## 靶点信息

研究背景	This gene encodes a calcium transporter that localizes to the mitochondrial inner membrane. The encoded protein interacts with mitochondrial calcium uptake 1. Alternative splicing results in multiple transcript variants.
基因ID	90550

基因名	MCU
Swiss	Q8NE86
别名	MCU; C10orf42; CCDC109A; HsMCU; mitochondrial calcium uniporter

## 产品验证



Western blot analysis of MCU expressed in Mouse spleen using MCU Rabbit pAb at 1:1000. Secondary antibody: HRP Goat Anti-Rabbit IgG (H+L) at 1:5000. Lysates/proteins: 30ug per lane. Blocking buffer: 5% n-fat dry milk in TBST. Detection: ECL Enhanced Kit. Exposure time: 120s.

## 实验步骤

访问官网浏览详情: [www.ablybio.cn](http://www.ablybio.cn)