

# PHF6 Rabbit pAb

货号: **AYP23679**

## 产品信息

反应	Human
宿主	Rabbit
克隆性	Polyclonal
预测反应	
应用	WB
推荐浓度	<b>WB:</b> 1:500 - 1:2000
理论分子量	35kDa/37kDa/41kDa
实测分子量	35kDa/37kDa/41kDa
形式	Liquid
保存条件	Store at -20°C. Avoid freeze / thaw cycles. Buffer: PBS with 0.01% thiomersal, 50% glycerol, pH7.3.
偶联物	Unconjugated
阳性对照	
细胞定位	Chromosome, Nucleus, centromere, kinetochore, nucleolus
纯化	Affinity purification

## 抗原信息

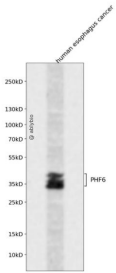
抗原信息	Recombinant fusion protein containing a sequence corresponding to amino acids 1-112 of human PHF6 (NP_115834.1).
序列	MSSSVEQKKGPTRQRKCGFCKSNRDKECGQLLISENQVAAHHKCMFLFSSALVSSHSDNESLGGFSIEDVQKEIKRGTKLMCSLCHCPGATIGCDVKTCRTHYHYHICALHDK

## 靶点信息

研究背景	This gene is a member of the plant homeodomain (PHD)-like finger (PHF) family. It encodes a protein with two PHD-type zinc finger domains, indicating a potential role in transcriptional regulation, that localizes to the nucleolus. Mutations affecting the coding region of this gene or the splicing of the transcript have been associated with Borjeson-Forssman-Lehmann syndrome (BFLS), a disorder characterized by mental retardation, epilepsy, hypogonadism, hypometabolism, obesity, swelling of subcutaneous tissue of the face, narrow palpebral fissures, and large ears. Alternate splicing results in multiple transcript variants, encoding different isoforms.
------	--

基因ID	84295
基因名	PHF6
Swiss	Q8IWS0
别名	PHF6; BFLS; BORJ; CENP-31; PHD finger protein 6

## 产品验证



Western blot analysis of PHF6 expressed in human esophagus cancer using PHF6 Rabbit pAb at 1:1000. Secondary antibody: HRP Goat Anti-Rabbit IgG (H+L) at 1:5000. Lysates/proteins: 30ug per lane. Blocking buffer: 5% non-fat dry milk in TBST. Detection: ECL Enhanced Kit. Exposure time: 120s.

## 实验步骤

访问官网浏览详情: [www.ablybio.cn](http://www.ablybio.cn)