

# STRADA Rabbit pAb

货号: AYP23662

## 产品信息

|       |  |
|-------|--|
| 反应    | Human  |
| 宿主    | Rabbit   |
| 克隆性   | Polyclonal   |
| 预测反应  |  |
| 应用    | WB   |
| 推荐浓度  | <b>WB:</b> 1:500 - 1:2000  |
| 理论分子量 | 33kDa/34kDa/38kDa/41kDa/43kDa/48kDa  |
| 实测分子量 | 33kDa/34kDa/38kDa/41kDa/43kDa/48kDa  |
| 形式    | Liquid   |
| 保存条件  | Store at -20°C. Avoid freeze / thaw cycles.<br>Buffer: PBS with 0.02% sodium azide,50% glycerol,pH7.3. |
| 偶联物   | Unconjugated   |
| 阳性对照  |  |
| 细胞定位  | Cytoplasm,Nucleus  |
| 纯化    | Affinity purification  |

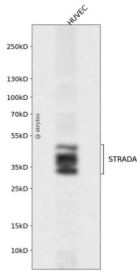
## 抗原信息

|      |  |
|------|--|
| 抗原信息 | Recombinant fusion protein containing a sequence corresponding to amino acids 25-210 of human STRADA (NP_699166.2).  |
| 序列   | FLPEGGCYELLTVIGKGFEDLMTVNLARYKPTGEYVTVRRINLEACSNEMVTFMQGELHVSCLFNHPNIVPYRATFIADNELWVVTSMAYGSAKDLICTHFMDGMNELAIAYILQGVKALDYIHHMGYVHRSVKASHILISVDGKVYLSGLRSNLSMISHGQRQRVVHDFPKYSVKVLPWLSPE |

## 靶点信息

|       |  |
|-------|--|
| 研究背景  | The protein encoded by this gene contains a STE20-like kinase domain, but lacks several residues that are critical for catalytic activity, so it is termed a 'pseudokinase'. The protein forms a heterotrimeric complex with serine/threonine kinase 11 (STK11, also known as LKB1) and the scaffolding protein calcium binding protein 39 (CAB39, also known as MO25). The protein activates STK11 leading to the phosphorylation of both proteins and excluding STK11 from the nucleus. The protein is necessary for STK11-induced G1 cell cycle arrest. A mutation in this gene has been shown to result in polyhydramnios, megalencephaly, and symptomatic epilepsy (PMSE) syndrome. Multiple transcript variants encoding different isoforms have been found for this gene. Additional transcript variants have been described but their full-length nature is not known. |
| 基因ID  | 92335  |
| 基因名   | STRADA   |
| Swiss | Q7RTN6   |
| 别名    | STRADA; LYK5; NY-BR-96; PMSE; STRAD; Stlk; STE20-related kinase adaptor alpha  |

## 产品验证



Western blot analysis of STRADA expressed in HUVEC using STRADA Rabbit pAb at 1:1000. Secondary antibody: HRP Goat Anti-Rabbit IgG (H+L) at 1:5000. Lysates/proteins: 30ug per lane. Blocking buffer: 5% non-fat dry milk in TBST. Detection: ECL Enhanced Kit. Exposure time: 120s.

## 实验步骤

访问官网浏览详情: [www.ablybio.cn](http://www.ablybio.cn)