

RAB1B Rabbit pAb

货号: **AYP23646**

产品信息

反应	Human,Mouse,Rat
宿主	Rabbit
克隆性	Polyclonal
预测反应	
应用	WB IF/ICC
推荐浓度	WB: 1:500 - 1:2000 IF/ICC: 1:50 - 1:200
理论分子量	22kDa
实测分子量	22kDa
形式	Liquid
保存条件	Store at -20°C. Avoid freeze / thaw cycles. Buffer: PBS with 0.02% sodium azide,50% glycerol,pH7.3.
偶联物	Unconjugated
阳性对照	HeLa cells, HEK-293 cells, Jurkat cells, K-562 cells, HSC-T6 cells, NIH/3T3 cells
细胞定位	Cytoplasm,Cytoplasmic side,Lipid-anchor,Membrane,Preautophagosomal structure membrane
纯化	Affinity purification

抗原信息

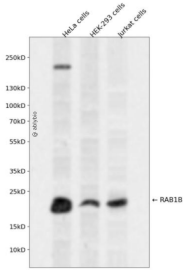
抗原信息	Recombinant fusion protein containing a sequence corresponding to amino acids 7-201 of human RAB1B (NP_112243.1).
序列	YLFKLLLIGDSGVGKSCLLLRFADDTYTESYISTIGVDFKIRTIELDGKTIKLIWDTAGQERFRTITSSYYRGAHGIIIVYDVT DQESYANVKQWLQEIDRYASENVNKLKLVGNKSDLTTKKVVDNTTAKFADSLGIPFLETSAKNATNVEQAFMTMAAEIKK RMGPGAASGGERP NLKIDSTPVK PAGGGCC

靶点信息

研究背景	Members of the RAB protein family, such as RAB1B, are low molecular mass monomeric GTPases localized on the cytoplasmic surfaces of distinct membrane-bound organelles. RAB1B functions in the early secretory pathway and is essential for vesicle transport between the endoplasmic reticulum (ER) and Golgi (Chen et al., 1997 [PubMed 9030196]; Alvarez et al., 2003 [PubMed 12802079]).[supplied by OMIM, Jan 2009]
------	--

基因ID	81876
基因名	RAB1B
Swiss	Q9H0U4
别名	RAB1B; ras-related protein Rab-1B

产品验证



Western blot analysis of RAB1B expressed in HeLa cells, HEK-293 cells, Jurkat cells using RAB1B Rabbit p Ab at 1:1000. Secondary antibody: HRP Goat Anti-Rabbit IgG (H+L) at 1:5000. Lysates/proteins: 30ug per lane. Blocking buffer: 5% non-fat dry milk in TBST. Detection: ECL Enhanced Kit. Exposure time: 120s

实验步骤

访问官网浏览详情: www.ablybio.cn