

CCDC6 Rabbit pAb

货号: **AYP23641**

产品信息

反应	Human
宿主	Rabbit
克隆性	Polyclonal
预测反应	
应用	WB IF/ICC
推荐浓度	WB: 1:500 - 1:2000 IF/ICC: 1:50 - 1:200
理论分子量	53kDa
实测分子量	53kDa
形式	Liquid
保存条件	Store at -20°C. Avoid freeze / thaw cycles. Buffer: PBS with 0.01% thiomersal, 50% glycerol, pH7.3.
偶联物	Unconjugated
阳性对照	
细胞定位	Cytoplasm, cytoskeleton
纯化	Affinity purification

抗原信息

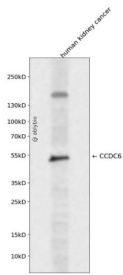
抗原信息	Recombinant fusion protein containing a sequence corresponding to amino acids 55-222 of human CCDC6 (NP_005427.2).
序列	RLEELTNRLASLQQENKVLKIELETYKLKCKALQEEENRDLRKASVTIQARAEQEEEFISNTLFKKIQALQKEKETLAVNYEKEEE FLTNELSRKLMQLQHEKAELEQHLQEQEFQVNKLMKKIKKLENDTISKQLTLEQLRREKIDLENTLEQEQEALVNRLWKRM D

靶点信息

研究背景	This gene encodes a coiled-coil domain-containing protein. The encoded protein is ubiquitously expressed and may function as a tumor suppressor. A chromosomal rearrangement resulting in the expression of a fusion gene containing a portion of this gene and the intracellular kinase-encoding domain of the ret proto-oncogene is the cause of thyroid papillary carcinoma.
------	---------------------------------------------------------------------------------------------------------------------------------------------------------------------------------------------------------------------------------------------------------------------------------------------------------------------------------------------------------------------------------

基因ID	8030
基因名	CCDC6
Swiss	Q16204
别名	CCDC6; D10S170; H4; PTC; TPC; TST1; coiled-coil domain containing 6

产品验证



Western blot analysis of CCDC6 expressed in human kidney cancer using CCDC6 Rabbit pAb at 1:1000. Secondary antibody: HRP Goat Anti-Rabbit IgG (H+L) at 1:5000. Lysates/proteins: 30ug per lane. Blocking buffer: 5% non-fat dry milk in TBST. Detection: ECL Enhanced Kit. Exposure time: 120s.

实验步骤

访问官网浏览详情: www.ablybio.cn