

PCIF1 Rabbit pAb

货号: **AYP23614**

产品信息

反应	Human,Mouse,Rat
宿主	Rabbit
克隆性	Polyclonal
预测反应	
应用	WB IHC IP
推荐浓度	WB: 1:500 - 1:2000 IHC: 1:50 - 1:100 IP: 1:500 - 1:1000
理论分子量	80kDa
实测分子量	80kDa
形式	Liquid
保存条件	Store at -20°C. Avoid freeze / thaw cycles. Buffer: PBS with 0.01% thiomersal,50% glycerol,pH7.3.
偶联物	Unconjugated
阳性对照	
细胞定位	intercellular bridge,microtubule cytoskeleton,nucleoplasm,nucleus
纯化	Affinity purification

抗原信息

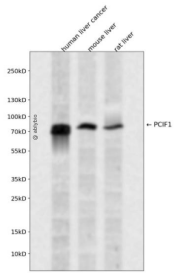
抗原信息	Recombinant fusion protein containing a sequence corresponding to amino acids 1-200 of human PCIF1 (NP_071387.1).
序列	MANENHGSPREEASLLSHSPGTSNQSQCSPKPIRLVQDLPEELVHAGWEKWCWSRRENRPYYFNRFTNQSLWEMPVLGQHDVISDPLGLNATPLPQDSSLVETPPAENKPRKRLSEEQPSGNGVKKPKIEIPVTPTGQSVSPSSIPGTPTLKMWGTSPEDKQQAALLRPTEVYWDLDIQTNAVIKHRGPSEVLPPHPE

靶点信息

研究背景	Cap-specific adenosine methyltransferase that catalyzes formation of N(6,2'-O-dimethyladenosine cap (m6A) by methylating the adenosine at the second transcribed position of capped mRNAs. Recruited to the early elongation complex of RNA polymerase II (RNAPII) via interaction with POLR2A and mediates formation of m6A co-transcriptionally.
------	--

基因ID	63935
基因名	PCIF1
Swiss	Q9H4Z3
别名	PCIF1; C20orf67; PPP1R121; PDX1 C-terminal inhibiting factor 1

产品验证



Western blot analysis of PCIF1 expressed in human liver cancer, mouse liver, rat liver using PCIF1 Rabbit p Ab at 1:1000. Secondary antibody: HRP Goat Anti-Rabbit IgG (H+L) at 1:5000. Lysates/proteins: 30ug per lane. Blocking buffer: 5% non-fat dry milk in TBST. Detection: ECL Enhanced Kit. Exposure time: 120s.

实验步骤

访问官网浏览详情: www.ablybio.cn