

RCN1 Rabbit pAb

货号: **AYP23611**

产品信息

反应	Human
宿主	Rabbit
克隆性	Polyclonal
预测反应	
应用	WB IF/ICC
推荐浓度	WB: 1:500 - 1:2000 IF/ICC: 1:50 - 1:200
理论分子量	33kDa/38kDa
实测分子量	33kDa/38kDa
形式	Liquid
保存条件	Store at -20°C. Avoid freeze / thaw cycles. Buffer: PBS with 0.01% thiomersal, 50% glycerol, pH7.3.
偶联物	Unconjugated
阳性对照	
细胞定位	Endoplasmic reticulum lumen
纯化	Affinity purification

抗原信息

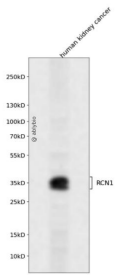
抗原信息	Recombinant fusion protein containing a sequence corresponding to amino acids 30-331 of human RCN1 (NP_002892.1).
序列	KPTVRKERVVRPDSSELGERPPEDNQSFQYDHEAFLGKEDSKTFDQLTPDESKERLGKIVDRIDNDGGDFVTTEELKTWIKRVQKRYIFDNVAKVWKDYDRDKDDKISWEEYKQATYGYLGNPAEFHDSSDHHTFKKMLPRDERRFKAADLNGDLTATREEFTAFLHPEEFEHMKEIVVLETLEDIDKNGDGFVDQDEYIADMFSHEENGPEPDWVLSEREQFNEFRDLNKGKLDKD EIRHWILPQDYDHAQAEARHLVYESDKNKDEKLTKEEILENWNMFVGSQATNYGEDLTKNHDEL

靶点信息

研究背景	Reticulocalbin 1 is a calcium-binding protein located in the lumen of the ER. The protein contains six conserved regions with similarity to a high affinity Ca(+2)-binding motif, the EF-hand. High conservation of amino acid residues outside of these motifs, in comparison to mouse reticulocalbin, is consistent with a possible biochemical function besides that of calcium binding. In human endothelial and prostate cancer cell lines this protein localizes to the plasma membrane.
------	--

基因ID	5954
基因名	RCN1
Swiss	Q15293
别名	RCN1; HEL-S-84; PIG20; RCAL; RCN; reticulocalbin-1

产品验证



Western blot analysis of RCN1 expressed in human kidney cancer using RCN1 Rabbit pAb at 1:1000. Secondary antibody: HRP Goat Anti-Rabbit IgG (H+L) at 1:5000. Lysates/proteins: 30ug per lane. Blocking buffer: 5% non-fat dry milk in TBST. Detection: ECL Enhanced Kit. Exposure time: 120s.

实验步骤

访问官网浏览详情: www.ablybio.cn