

RAB2A Rabbit pAb

货号: AYP23606

产品信息

反应	Human
宿主	Rabbit
克隆性	Polyclonal
预测反应	
应用	WB
推荐浓度	WB: 1:500 - 1:2000
理论分子量	20kDa/23kDa
实测分子量	20kDa/23kDa
形式	Liquid
保存条件	Store at -20°C. Avoid freeze / thaw cycles. Buffer: PBS with 0.01% thiomersal, 50% glycerol, pH7.3.
偶联物	Unconjugated
阳性对照	
细胞定位	Endoplasmic reticulum membrane, Endoplasmic reticulum-Golgi intermediate compartment membrane, Golgi apparatus membrane, Lipid-anchor, Melanosome
纯化	Affinity purification

抗原信息

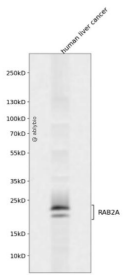
抗原信息	Recombinant fusion protein containing a sequence corresponding to amino acids 1-212 of human RAB2A (NP_002856.1).
序列	MAYAYLFKYIIIGDTGVGKSCLLQFTDKRFQPVHDLTIGVEFGARMITIDGKQIKLQIWDTAGQESFRSITRSYYRGAAGAL LVYDITRRDTFNHLTTWLEDARQHSNSNMVIMLIGNKSDLESRRREVKKEEGEAFAREHGLIFMETSAKTASNVEEAFINTAK EIYEKIQEGVFDINNEANGIKIGPQHAATNATHAGNQGGQQAGGGCC

靶点信息

研究背景	The protein encoded by this gene belongs to the Rab family, members of which are small molecular weight guanosine triphosphatases (GTPases) that contain highly conserved domains involved in GTP binding and hydrolysis. The Rabs are membrane-bound proteins, involved in vesicular fusion and trafficking. This protein is a resident of pre-Golgi intermediates, and is required for protein transport from the endoplasmic reticulum (ER) to the Golgi complex. Alternatively spliced transcript variants encoding different isoforms have been found for this gene.
------	---------------------------------------------------------------------------------------------------------------------------------------------------------------------------------------------------------------------------------------------------------------------------------------------------------------------------------------------------------------------------------------------------------------------------------------------------------------------------------------------------------------------------------------------------------------------------

基因ID	5862
基因名	RAB2A
Swiss	P61019
别名	RAB2A; LHX; RAB2; ras-related protein Rab-2A

产品验证



Western blot analysis of RAB2A expressed in human liver cancer using RAB2A Rabbit pAb at 1:1000. Secondary antibody: HRP Goat Anti-Rabbit IgG (H+L) at 1:5000. Lysates/proteins: 30ug per lane. Blocking buffer: 5% non-fat dry milk in TBST. Detection: ECL Enhanced Kit. Exposure time: 120s.

实验步骤

访问官网浏览详情: www.ablybio.cn