

# PP2A-A $\beta$ /PR65 $\beta$ /PPP2R1B Rabbit pAb

货号: AYP23598

## 产品信息

反应	Human
宿主	Rabbit
克隆性	Polyclonal
预测反应	
应用	WB IF/ICC
推荐浓度	<b>WB:</b> 1:500 - 1:1000 <b>IF/ICC:</b> 1:50 - 1:200
理论分子量	52kDa/61kDa/66kDa/73kDa
实测分子量	66KDa
形式	Liquid
保存条件	Store at -20°C. Avoid freeze / thaw cycles. Buffer: PBS with 0.02% sodium azide,50% glycerol,pH7.3.
偶联物	Unconjugated
阳性对照	hek293T
细胞定位	cytoplasm,extracellular exosome
纯化	Affinity purification

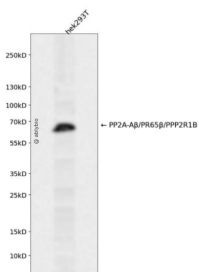
## 抗原信息

抗原信息	Recombinant fusion protein containing a sequence corresponding to amino acids 468-667 of human PP2A-A $\beta$ /PR65 $\beta$ /PPP2R1B (NP_859050.1).
序列	YAIREAATNNLMKLVQKFGTEWAQNTIVPKVLVMANDPNYLHRMTTLFCINALSEACGQEITTKQMLPIVLKMGDQVANV RFNVAKSLQKIGPILDTNALQGEVKPVLQKLGQDEDMDVKYFAQEASVVAQRLRKLEFPVKDSGEPVPRADKNHFPRPT VPGEDMGKGPVYQLRGDTRDTLAQLGIAELVHFSQSTD

## 靶点信息

研究背景	This gene encodes a constant regulatory subunit of protein phosphatase 2. Protein phosphatase 2 is one of the four major Ser/Thr phosphatases, and it is implicated in the negative control of cell growth and division. It consists of a common heteromeric core enzyme, which is composed of a catalytic subunit and a constant regulatory subunit, that associates with a variety of regulatory subunits. The constant regulatory subunit A serves as a scaffolding molecule to coordinate the assembly of the catalytic subunit and a variable regulatory B subunit. This gene encodes a beta isoform of the constant regulatory subunit A. Mutations in this gene have been associated with some lung and colon cancers. Alternatively spliced transcript variants have been described.
基因ID	5519
基因名	PPP2R1B
Swiss	P30154
别名	PPP2R1B; PP2A-Abeta; PR65B; protein phosphatase 2 scaffold subunit Abeta

## 产品验证



Western blot analysis of PP2A-A $\beta$ /PR65 $\beta$ /PPP2R1B expressed in hek293T using PP2A-A $\beta$ /PR65 $\beta$ /PPP2R1B Rabbit pAb at 1:1000. Secondary antibody: HRP Goat Anti-Rabbit IgG (H+L) at 1:5000. Lysates/proteins: 30ug per lane. Blocking buffer: 5% non-fat dry milk in TBST. Detection: ECL Enhanced Kit. Exposure time: 120s.

## 实验步骤

访问官网浏览详情: [www.ablybio.cn](http://www.ablybio.cn)