

CHRAC1 Rabbit pAb

货号: AYP23594

产品信息

反应	Human
宿主	Rabbit
克隆性	Polyclonal
预测反应	
应用	WB IF/ICC
推荐浓度	WB: 1:500 - 1:2000 IF/ICC: 1:50 - 1:200
理论分子量	14kDa
实测分子量	14kDa
形式	Liquid
保存条件	Store at -20°C. Avoid freeze / thaw cycles. Buffer: PBS with 0.02% sodium azide,50% glycerol,pH7.3.
偶联物	Unconjugated
阳性对照	
细胞定位	Nucleus
纯化	Affinity purification

抗原信息

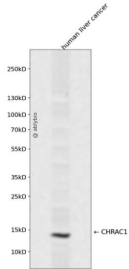
抗原信息	Recombinant fusion protein containing a sequence corresponding to amino acids 1-131 of human CHRAC 1 (NP_059140.1).
序列	MADVVGKDKGGGEQLISLPLSRIRVIMKSSPEVSSINQEALVLTAKATELQVCLATYSYRHGSGKEKKVLTYSDLANTAQ QSETFQFLADILPKKILASKYKMLKKEEKREDEEENDNDNESDHDEADS

靶点信息

研究背景	CHRAC1 is a histone-fold protein that interacts with other histone-fold proteins to bind DNA in a sequence-independent manner. These histone-fold protein dimers combine within larger enzymatic complexes for DNA transcription, replication, and packaging.[supplied by OMIM, Apr 2004]
基因ID	54108

基因名	CHRAC1
Swiss	Q9NRG0
别名	CHRAC1; CHARC1; CHARC15; CHRAC-1; CHRAC-15; CHRAC15; YCL1; chromatin accessibility complex 1

产品验证



Western blot analysis of CHRAC1 expressed in human liver cancer using CHRAC1 Rabbit pAb at 1:1000. Secondary antibody: HRP Goat Anti-Rabbit IgG (H+L) at 1:5000. Lysates/proteins: 30ug per lane. Blocking buffer: 5% non-fat dry milk in TBST. Detection: ECL Enhanced Kit. Exposure time: 120s.

实验步骤

访问官网浏览详情: www.ablybio.cn