

— ABLYBIO, Help Your Research



PIK3C2A Rabbit pAb

货号: **AYP23590**

产品信息

反应	Human,Mouse,Rat
宿主	Rabbit
克隆性	Polyclonal
预测反应	
应用	WB IHC IF/ICC IP
推荐浓度	WB: 1:500 - 1:2000 IHC: 1:50 - 1:200 IF/ICC: 1:50 - 1:200 IP: 1:50 - 1:200
理论分子量	53kDa/190kDa
实测分子量	53kDa/190kDa
形式	Liquid
保存条件	Store at -20°C. Avoid freeze / thaw cycles. Buffer: PBS with 0.02% sodium azide,50% glycerol,pH7.3.
偶联物	Unconjugated
阳性对照	HeLa cells, PC-3 cells, human placenta tissue
细胞定位	Cell membrane,Cytoplasm,Cytoplasmic vesicle,Golgi apparatus,Nucleus,clathrin-coated vesicle
纯化	Affinity purification

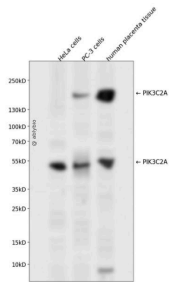
抗原信息

抗原信息	Recombinant fusion protein containing a sequence corresponding to amino acids 1-200 of human PIK3C2 A (NP_002636.2).
------	--

靶点信息

研究背景	The protein encoded by this gene belongs to the phosphoinositide 3-kinase (PI3K) family. PI3-kinases play roles in signaling pathways involved in cell proliferation, oncogenic transformation, cell survival, cell migration, and intracellular protein trafficking. This protein contains a lipid kinase catalytic domain as well as a C-terminal C2 domain, a characteristic of class II PI3-kinases. C2 domains act as calcium-dependent phospholipid binding motifs that mediate translocation of proteins to membranes, and may also mediate protein-protein interactions. The PI3-kinase activity of this protein is not sensitive to nanomolar levels of the inhibitor wortmanin. This protein was shown to be able to be activated by insulin and may be involved in integrin-dependent signaling.
基因ID	5286
基因名	PIK3C2A
Swiss	O00443 (https://www.uniprot.org/uniprotkb/O00443/entry)
别名	PIK3C2A,CPK,PI3-K-C2(ALPHA),PI3-K-C2A,PI3K-C2-alpha,PI3K-C2alpha,phosphatidylinositol-4-phosphate 3-kinase catalytic subunit type 2 alpha,PIK3C2A Rabbit pAb,Phosphoinositide 3-kinase-C2-alpha

产品验证



Western blot analysis of PIK3C2A expressed in HeLa cells, PC-3 cells, human placenta tissue using PIK3C2A Rabbit pAb at 1:1000. Secondary antibody: HRP Goat Anti-Rabbit IgG (H+L) at 1:5000. Lysates/proteins: 30ug per lane. Blocking buffer: 5% non-fat dry milk in TBST. Detection: ECL Enhanced Kit. Exposure time: 120s.

实验步骤

访问官网浏览详情: www.ablybio.cn (<https://www.ablybio.cn/www.ablybio.cn>)