

NME1/NM23A Rabbit pAb

货号: AYP23576

产品信息

反应	Human,Rat
宿主	Rabbit
克隆性	Polyclonal
预测反应	
应用	WB IF/ICC
推荐浓度	WB: 1:500 - 1:2000 IF/ICC: 1:50 - 1:200
理论分子量	17kDa/19kDa/30kDa
实测分子量	17kDa/19kDa/30kDa
形式	Liquid
保存条件	Store at -20°C. Avoid freeze / thaw cycles. Buffer: PBS with 0.02% sodium azide,50% glycerol,pH7.3.
偶联物	Unconjugated
阳性对照	
细胞定位	Cytoplasm,Nucleus
纯化	Affinity purification

抗原信息

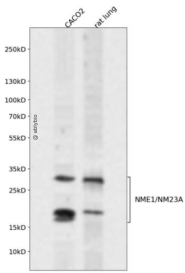
抗原信息	A synthetic peptide corresponding to a sequence within amino acids 90 to the C-terminus of human NME1/NM23A (NP_000260.1).
序列	MLGETNPADSKPGTIRGDFCIQVGRNIIHGSDSVESAEKEIGLWFHPEELVDYTSCAQNWIYE

靶点信息

研究背景	This gene (NME1) was identified because of its reduced mRNA transcript levels in highly metastatic cells. Nucleoside diphosphate kinase (NDK) exists as a hexamer composed of 'A' (encoded by this gene) and 'B' (encoded by NME2) isoforms. Mutations in this gene have been identified in aggressive neuroblastomas. Two transcript variants encoding different isoforms have been found for this gene. Co-transcription of this gene and the neighboring downstream gene (NME2) generates naturally-occurring transcripts (NME1-NM E2), which encodes a fusion protein comprised of sequence sharing identity with each individual gene product.
------	---

基因ID	4830
基因名	NME1
Swiss	P15531
别名	NME1; AWD; GAAD; NB; NBS; NDKA; NDPK-A; NDPKA; NM23; NM23-H1; nucleoside diphosphate kinase A

产品验证



Western blot analysis of NME1/NM23A expressed in CACO2, rat lung using NME1/NM23A Rabbit pAb at 1:1000. Secondary antibody: HRP Goat Anti-Rabbit IgG (H+L) at 1:5000. Lysates/proteins: 30ug per lane. Blocking buffer: 5% non-fat dry milk in TBST. Detection: ECL Enhanced Kit. Exposure time: 120s.

实验步骤

访问官网浏览详情: www.ablybio.cn