

# MTX1 Rabbit pAb

货号: **AYP23567**

## 产品信息

|       |  |
|-------|--|
| 反应    | Human  |
| 宿主    | Rabbit   |
| 克隆性   | Polyclonal   |
| 预测反应  |  |
| 应用    | WB IF/ICC  |
| 推荐浓度  | <b>WB:</b> 1:500 - 1:2000<br><b>IF/ICC:</b> 1:50 - 1:200   |
| 理论分子量 | 35kDa/48kDa/51kDa  |
| 实测分子量 | 35kDa/48kDa/51kDa  |
| 形式    | Liquid   |
| 保存条件  | Store at -20°C. Avoid freeze / thaw cycles.<br>Buffer: PBS with 0.02% sodium azide,50% glycerol,pH7.3. |
| 偶联物   | Unconjugated   |
| 阳性对照  |  |
| 细胞定位  | Membrane,Mitochondrion outer membrane,Single-pass type I membrane protein                              |
| 纯化    | Affinity purification  |

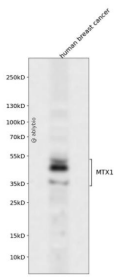
## 抗原信息

|      |   |
|------|---|
| 抗原信息 | Recombinant fusion protein containing a sequence corresponding to amino acids 186-435 of human MTX 1 (NP_942584.2).   |
| 序列   | LKVHKISNPWQSPSGTLPALRTSHGEVISVPHKIIITHLRKEVHTFWIDTKNYVEVTRKWYAEAMPFPLNFFLPGRMQRQYM<br>ERLQLLTGEHRPEDEEELEKELYREARECLTLLSQRSGKFFFGDAPASLDAFVFSYLALLLQAKLPSGKLQVHLRGLHNL<br>CAYCTHILSLYFPWDGAEVPPQRQTPAGPETEEEPYRRRNQILSVLAGLAAMVGYALLSGIVSIQRATPARAPGTRTLGMAE<br>EDEEE |

## 靶点信息

|       |   |
|-------|---|
| 研究背景  | METAXINs are proteins located in the outer membrane of the mammalian mitochondrion. METAXIN 1 was characterized firstly and was found to play a role in the import of mitochondrial precursor proteins. It may also play a role in the assembly of b-barrel proteins into the outer membrane METAXIN1 was reported to be essential for survival of the postimplantation mouse embryo. METAXIN 1 has multiple transcripts. The full length one has 466 amino acids, with calculated MW of 62 kda. Metaxin 1 interacts with metaxin 2, a novel related protein associated with the mammalian mitochondrial outer membrane and form complex in the mitochondrion outer membrane. |
| 基因ID  | 4580  |
| 基因名   | MTX1  |
| Swiss | Q13505  |
| 别名    | MTX1; MTX; MTXN; metaxin-1  |

## 产品验证



Western blot analysis of MTX1 expressed in human breast cancer using MTX1 Rabbit pAb at 1:1000. Secondary antibody: HRP Goat Anti-Rabbit IgG (H+L) at 1:5000. Lysates/proteins: 30ug per lane. Blocking buffer: 5% non-fat dry milk in TBST. Detection: ECL Enhanced Kit. Exposure time: 120s.

## 实验步骤

访问官网浏览详情: [www.ablybio.cn](http://www.ablybio.cn)