

HPCAL1 Rabbit pAb

货号: AYP23546

产品信息

| | |
|-------|--|
| 反应 | Human,Mouse,Rat |
| 宿主 | Rabbit |
| 克隆性 | Polyclonal |
| 预测反应 | |
| 应用 | WB IP |
| 推荐浓度 | WB: 1:500 - 1:2000 IP: 50 - 1:200 |
| 理论分子量 | 22kDa |
| 实测分子量 | 22kDa |
| 形式 | Liquid |
| 保存条件 | Store at -20°C. Avoid freeze / thaw cycles. Buffer: PBS with 0.02% sodium azide,50% glycerol,pH7.3. |
| 偶联物 | Unconjugated |
| 阳性对照 | |
| 细胞定位 | Lipid-anchor,Membrane |
| 纯化 | Affinity purification |

抗原信息

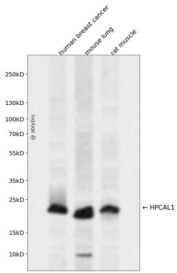
| | |
|------|---|
| 抗原信息 | Recombinant fusion protein containing a sequence corresponding to amino acids 1-193 of human HPCAL1 (NP_002140.2). |
| 序列 | MGKQNSKLRPEVLQDLRENTFTDHELQEWYKGLKDCPTGHLTVDEFKKIYANFFPYGDASKFAEHVFRFTDNGDGTI DFREFIIALSVTSRGKLEQLKWAFSMYDLDGNGYISRSEMLEIVQAIYKMVSSVMKMPDESTPEKRTDKIFRQMDTND GKLSLEEFIRGAKSDPSIVRLLQCDPSSASQF |

靶点信息

| | |
|------|---|
| 研究背景 | The protein encoded by this gene is a member of neuron-specific calcium-binding proteins family found in the retina and brain. It is highly similar to human hippocalcin protein and nearly identical to the rat and mouse hippocalcin like-1 proteins. It may be involved in the calcium-dependent regulation of rhodopsin phosphorylation and may be of relevance for neuronal signalling in the central nervous system. Several alternatively spliced transcript variants encoding the same protein have been found for this gene. |
|------|---|

| | |
|-------|---|
| 基因ID | 3241 |
| 基因名 | HPCAL1 |
| Swiss | P37235 |
| 别名 | HPCAL1; BDR1; HLP2; VILIP-3; hippocalcin like 1 |

产品验证



Western blot analysis of HPCAL1 expressed in human breast cancer, mouse lung, rat muscle using HPCAL1 Rabbit pAb at 1:1000. Secondary antibody: HRP Goat Anti-Rabbit IgG (H+L) at 1:5000. Lysates/proteins: 30ug per lane. Blocking buffer: 5% non-fat dry milk in TBST. Detection: ECL Enhanced Kit. Exposure time: 120s.

实验步骤

访问官网浏览详情: www.ablybio.cn