

# MSH6 Rabbit pAb

货号: **AYP23543**

## 产品信息

|       |  |
|-------|--|
| 反应    | Human,Mouse,Rat,MK   |
| 宿主    | Rabbit   |
| 克隆性   | Polyclonal   |
| 预测反应  |  |
| 应用    | <a href="#">WB</a> <a href="#">IHC</a> <a href="#">IF/ICC</a>  |
| 推荐浓度  | <b>WB:</b> 1:500 - 1:1000<br><b>IHC:</b> 1:50 - 1:200<br><b>IF/ICC:</b> 1:50 - 1:200                 |
| 理论分子量 | 119kDa/120kDa/137kDa/152kDa  |
| 实测分子量 | 119kDa/120kDa/137kDa/152kDa  |
| 形式    | Liquid   |
| 保存条件  | Store at -20°C. Avoid freeze / thaw cycles.<br>Buffer: PBS with 0.01% thiomersal,50% glycerol,pH7.3. |
| 偶联物   | Unconjugated   |
| 阳性对照  |  |
| 细胞定位  | Chromosome,Nucleus   |
| 纯化    | Affinity purification  |

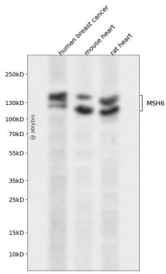
## 抗原信息

|      |   |
|------|---|
| 抗原信息 | A synthetic peptide corresponding to a sequence within amino acids 1-100 of human MSH6 (NP_000170.1).   |
| 序列   | MSRQSTLYSFFPKSPALSDANKASARASREGGRAAAAPGASPSGGDAAWSEAGPGPRPLARSASPPKAKNLNGGLRRS<br>VAPAAPTSCDFSPGDLVWAKM |

## 靶点信息

|       |  |
|-------|--|
| 研究背景  | This gene encodes a member of the DNA mismatch repair MutS family. In E. coli, the MutS protein helps in the recognition of mismatched nucleotides prior to their repair. A highly conserved region of approximately 150 aa, called the Walker-A adenine nucleotide binding motif, exists in MutS homologs. The encoded protein heterodimerizes with MSH2 to form a mismatch recognition complex that functions as a bidirectional molecular switch that exchanges ADP and ATP as DNA mismatches are bound and dissociated. Mutations in this gene may be associated with hereditary nonpolyposis colon cancer, colorectal cancer, and endometrial cancer. Transcripts variants encoding different isoforms have been described. |
| 基因ID  | 2956   |
| 基因名   | MSH6   |
| Swiss | P52701   |
| 别名    | MSH6; GTBP; GTMBP; HNPCC5; HSAP; p160; mutS homolog 6  |

## 产品验证



Western blot analysis of MSH6 expressed in human breast cancer, mouse heart, rat heart using MSH6 Rabbit pAb at 1:1000. Secondary antibody: HRP Goat Anti-Rabbit IgG (H+L) at 1:5000. Lysates/proteins: 30ug per lane. Blocking buffer: 5% non-fat dry milk in TBST. Detection: ECL Enhanced Kit. Exposure time: 120s.

## 实验步骤

访问官网浏览详情: [www.ablybio.cn](http://www.ablybio.cn)