

# UBE2S Rabbit pAb

货号: **AYP23537**

## 产品信息

反应	Human,Mouse,Rat
宿主	Rabbit
克隆性	Polyclonal
预测反应	
应用	WB IF/ICC
推荐浓度	<b>WB:</b> 1:500 - 1:2000 <b>IF/ICC:</b> 1:50 - 1:200
理论分子量	23kDa
实测分子量	23kDa
形式	Liquid
保存条件	Store at -20°C. Avoid freeze / thaw cycles. Buffer: PBS with 0.02% sodium azide,50% glycerol,pH7.3.
偶联物	Unconjugated
阳性对照	MCF-7 cells, HEK-293T cells, mouse liver tissue, A2780 cells, human liver tissue, MDA-MB-453s cells, HeLa cells, MOLT-4 cells, PC-3 cells, HEK-293 cells
细胞定位	cytosol,nucleoplasm,nucleus
纯化	Affinity purification

## 抗原信息

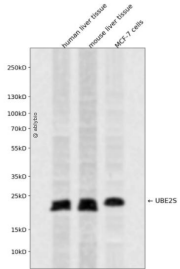
抗原信息	Recombinant fusion protein containing a sequence corresponding to amino acids 122-221 of human UBE2S (NP_055316.2).
序列	HPNPESALNEEAGRLLLENYEEYAARARLLTEIHGGAGGPPSGRAEAGRALASGTEASSTDPGAPGGPGGAEGPMAKKHAGERDKKLAAKKTKDKRALRR

## 靶点信息

研究背景	This gene encodes a member of the ubiquitin-conjugating enzyme family. The encoded protein is able to form a thiol ester linkage with ubiquitin in a ubiquitin activating enzyme-dependent manner, a characteristic property of ubiquitin carrier proteins.
基因ID	27338

基因名	UBE2S
Swiss	Q16763
别名	UBE2S; E2-EPF; E2EPF; EPF5; ubiquitin-conjugating enzyme E2 S

## 产品验证



Western blot analysis of UBE2S expressed in human liver tissue, mouse liver tissue, MCF-7 cells using UBE2S Rabbit pAb at 1:1000. Secondary antibody: HRP Goat Anti-Rabbit IgG (H+L) at 1:5000. Lysates/proteins: 30ug per lane. Blocking buffer: 5% non-fat dry milk in TBST. Detection: ECL Enhanced Kit. Exposure time: 120s.

## 实验步骤

访问官网浏览详情: [www.ablybio.cn](http://www.ablybio.cn)