

FKBP2 Rabbit pAb

货号: **AYP23522**

产品信息

反应	Human
宿主	Rabbit
克隆性	Polyclonal
预测反应	
应用	WB
推荐浓度	WB: 1:500 - 1:2000
理论分子量	15kDa
实测分子量	15kDa
形式	Liquid
保存条件	Store at -20°C. Avoid freeze / thaw cycles. Buffer: PBS with 0.02% sodium azide,50% glycerol,pH7.3.
偶联物	Unconjugated
阳性对照	
细胞定位	Endoplasmic reticulum membrane,Peripheral membrane protein
纯化	Affinity purification

抗原信息

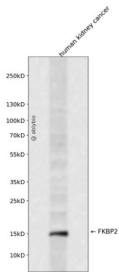
抗原信息	Recombinant fusion protein containing a sequence corresponding to amino acids 22-142 of human FKBP2 (NP_004461.2).
序列	ATGAEGKRKLQIGVKRVDHCPKSRKGDVLHMHYTGKLEDGTEFDSSLPQNQPFVFSLGTGQVIKGWQDQLLGMCEG EKRKLVIPSELGYGERGAPPKIPGGATLVFEVELLKIERTEL

靶点信息

研究背景	The protein encoded by this gene is a member of the immunophilin protein family, which play a role in immunoregulation and basic cellular processes involving protein folding and trafficking. This encoded protein is a cis-trans prolyl isomerase that binds the immunosuppressants FK506 and rapamycin. It is thought to function as an ER chaperone and may also act as a component of membrane cytoskeletal scaffolds. Multiple alternatively spliced variants, encoding the same protein, have been identified.
基因ID	2286

基因名	FKBP2
Swiss	P26885
别名	FKBP2; FKBP-13; PPlase; FK506 binding protein 2

产品验证



Western blot analysis of FKBP2 expressed in human kidney cancer using FKBP2 Rabbit pAb at 1:1000. Secondary antibody: HRP Goat Anti-Rabbit IgG (H+L) at 1:5000. Lysates/proteins: 30ug per lane. Blocking buffer: 5% non-fat dry milk in TBST. Detection: ECL Enhanced Kit. Exposure time: 120s.

实验步骤

访问官网浏览详情: www.ablybio.cn