

FH Rabbit pAb

货号: **AYP23521**

产品信息

反应	Human
宿主	Rabbit
克隆性	Polyclonal
预测反应	
应用	WB
推荐浓度	WB: 1:500 - 1:1000
理论分子量	50kDa/54kDa
实测分子量	49KDa
形式	Liquid
保存条件	Store at -20°C. Avoid freeze / thaw cycles. Buffer: PBS with 0.02% sodium azide,50% glycerol,pH7.3.
偶联物	Unconjugated
阳性对照	293T
细胞定位	Cytoplasm,Mitochondrion
纯化	Affinity purification

抗原信息

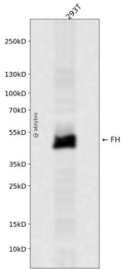
抗原信息	A synthetic peptide corresponding to a sequence within amino acids 50-150 of human FH (NP_000134.2).
序列	FRIEYDTFGELKVPNDKYYGAQTVRSTMNFKIGGVTERMPTPVIAKAFGILKRAAAEVNQDYGLDPKIANAIMKAADEVAEGK LNDHFPLVWVWQTGSGTQTN

靶点信息

研究背景	The protein encoded by this gene is an enzymatic component of the tricarboxylic acid (TCA) cycle, or Krebs cycle, and catalyzes the formation of L-malate from fumarate. It exists in both a cytosolic form and an N-terminal extended form, differing only in the translation start site used. The N-terminal extended form is targeted to the mitochondrion, where the removal of the extension generates the same form as in the cytoplasm. It is similar to some thermostable class II fumarases and functions as a homotetramer. Mutations in this gene can cause fumarase deficiency and lead to progressive encephalopathy.
基因ID	2271

基因名	FH
Swiss	P07954
别名	FH; FMRD; HLRCC; LRCC; MCL; MCUL1; fumarate hydratase

产品验证



Western blot analysis of FH expressed in 293T using FH Rabbit pAb at 1:1000. Secondary antibody: HRP Goat Anti-Rabbit IgG (H+L) at 1:5000. Lysates/proteins: 30ug per lane. Blocking buffer: 5% non-fat dry milk in TBST. Detection: ECL Enhanced Kit. Exposure time: 120s.

实验步骤

访问官网浏览详情: www.ablybio.cn