

# Lrwd1 Rabbit pAb

货号: **AYP23519**

## 产品信息

反应	Human
宿主	Rabbit
克隆性	Polyclonal
预测反应	
应用	WB
推荐浓度	<b>WB:</b> 1:500 - 1:2000
理论分子量	70kDa
实测分子量	70kDa
形式	Liquid
保存条件	Store at -20°C. Avoid freeze / thaw cycles. Buffer: PBS with 0.01% thiomersal, 50% glycerol, pH7.3.
偶联物	Unconjugated
阳性对照	
细胞定位	Chromosome, Cytoplasm, Nucleus, centromere, centrosome, cytoskeleton, microtubule organizing center, telomere
纯化	Affinity purification

## 抗原信息

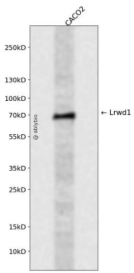
抗原信息	A synthetic peptide corresponding to a sequence within amino acids 250-350 of human Lrwd1 (NP_690852.1).
序列	ASPSAQVEGSPVAGSDGSQPAVKLEPLHFLQCHSKNNSPQDLETQLWACAFEPAWEEGATSQTVATCGGEAVCVIDCQ TGIVLHKYKAPGEEFFSVAWTAL

## 靶点信息

研究背景	The protein encoded by this gene interacts with components of the origin recognition complex (ORC) and regulates the formation of the prereplicative complex. The encoded protein stabilizes the ORC and therefore aids in DNA replication. This protein is required for the G1/S phase transition of the cell cycle. In addition, the encoded protein binds to trimethylated histone H3 in heterochromatin and recruits the ORC and lysine methyltransferases, which help maintain the repressive heterochromatic state. Two transcript variants encoding different isoforms have been found for this gene.
------	--

基因ID	222229
基因名	LRWD1
Swiss	Q9UFC0
别名	LRWD1; CENP-33; ORCA; leucine-rich repeat and WD repeat-containing protein 1

## 产品验证



Western blot analysis of Lrwd1 expressed in CACO2 using Lrwd1 Rabbit pAb at 1:1000. Secondary antibody: HRP Goat Anti-Rabbit IgG (H+L) at 1:5000. Lysates/proteins: 30ug per lane. Blocking buffer: 5% non-fat dry milk in TBST. Detection: ECL Enhanced Kit. Exposure time: 120s.

## 实验步骤

访问官网浏览详情: [www.ablybio.cn](http://www.ablybio.cn)