

MYL6B Rabbit pAb

货号: **AYP23505**

产品信息

反应	Human
宿主	Rabbit
克隆性	Polyclonal
预测反应	
应用	WB
推荐浓度	WB: 1:500 - 1:2000
理论分子量	22kDa
实测分子量	22kDa
形式	Liquid
保存条件	Store at -20°C. Avoid freeze / thaw cycles. Buffer: PBS with 0.02% sodium azide,50% glycerol,pH7.3.
偶联物	Unconjugated
阳性对照	
细胞定位	cytosol,extracellular exosome
纯化	Affinity purification

抗原信息

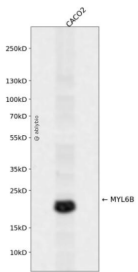
抗原信息	Recombinant fusion protein containing a sequence corresponding to amino acids 1-208 of human MYL6B (NP_002466.1).
序列	MPPKKDVPVKKPAGPSISKPAAKPAAAGAPPAKTKAEPVAVPQAPQKTQEPPVDLSKVWIEFNKDQLEEFKEAFELFDRVGD GKILYSQCGDVMRALGQNPTNAEVLKVLGNPKSDELKSRVDFETFLPMLQAVAKNRGQGTIEDYLEGFRVFDKEGNGK VMGAELRHVLTTLGKMTTEEEVETVLAGHEDSNGCINYEAFKHLISV

靶点信息

研究背景	Myosin is a hexameric ATPase cellular motor protein. It is composed of two heavy chains, two nonphosphorylatable alkali light chains, and two phosphorylatable regulatory light chains. This gene encodes a myosin in alkali light chain expressed in both slow-twitch skeletal muscle and in nonmuscle tissue. Alternative splicing results in multiple transcript variants.
基因ID	140465

基因名	MYL6B
Swiss	P14649
别名	MYL6B; MLC15A; myosin light chain 6B

产品验证



Western blot analysis of MYL6B expressed in CACO2 using MYL6B Rabbit pAb at 1:1000. Secondary antibody: HRP Goat Anti-Rabbit IgG (H+L) at 1:5000. Lysates/proteins: 30ug per lane. Blocking buffer: 5% non-fat dry milk in TBST. Detection: ECL Enhanced Kit. Exposure time: 120s.

实验步骤

访问官网浏览详情: www.ablybio.cn