

# TMED10 Rabbit pAb

货号: **AYP23496**

## 产品信息

|       |  |
|-------|--|
| 反应    | Human  |
| 宿主    | Rabbit   |
| 克隆性   | Polyclonal   |
| 预测反应  |  |
| 应用    | WB IF/ICC IHC  |
| 推荐浓度  | <b>WB:</b> 1:500 - 1:2000<br><b>IF/ICC:</b> 1:50 - 1:200<br><b>IHC:</b> 1:50 - 1:200   |
| 理论分子量 | 24kDa  |
| 实测分子量 | 24kDa  |
| 形式    | Liquid   |
| 保存条件  | Store at -20°C. Avoid freeze / thaw cycles.<br>Buffer: PBS with 0.02% sodium azide,50% glycerol,pH7.3.   |
| 偶联物   | Unconjugated   |
| 阳性对照  |  |
| 细胞定位  | Cell membrane,Cytoplasmic vesicle,Endoplasmic reticulum membrane,Endoplasmic reticulum-Golgi intermediate compartment membrane,Golgi apparatus,Melanosome,Single-pass type I membrane protein,cis-Golgi network membrane,secretory vesicle membrane,trans-Golgi network membrane |
| 纯化    | Affinity purification  |

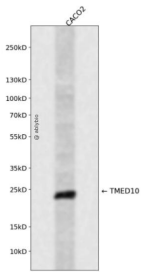
## 抗原信息

|      |   |
|------|---|
| 抗原信息 | Recombinant fusion protein containing a sequence corresponding to amino acids 35-190 of human TMED 10 (NP_006818.3).  |
| 序列   | HLPINSRKCLREEIHKDLLVTGAYEISDQSGGAGGLRSHLKITDSAGHILYSKEDATKGKFAFTTEDYDMFEVCFESKGTGR<br>IPDQLVILDMKHGVEAKNYEEIAKVEKLPLEVELRRLEDLSESIVNDFAYMKKREEEMRDTNESTNTRVLYFS |

## 靶点信息

|       |  |
|-------|--|
| 研究背景  | This gene is a member of the EMP24/GP25L/p24 family and encodes a protein with a GOLD domain. This type I membrane protein is localized to the plasma membrane and golgi cisternae and is involved in vesicular protein trafficking. The protein is also a member of a heteromeric secretase complex and regulates the complex's gamma-secretase activity without affecting its epsilon-secretase activity. Mutations in this gene have been associated with early-onset familial Alzheimer's disease. This gene has a pseudogene on chromosome 8. |
| 基因ID  | 10972  |
| 基因名   | TMED10   |
| Swiss | P49755   |
| 别名    | TMED10; P24(DELTA); S31I125; S31III125; TMP21; Tmp-21-I; p23; p24d1; transmembrane p24 trafficking protein 10  |

## 产品验证



Western blot analysis of TMED10 expressed in CACO2 using TMED10 Rabbit pAb at 1:1000. Secondary antibody: HRP Goat Anti-Rabbit IgG (H+L) at 1:5000. Lysates/proteins: 30ug per lane. Blocking buffer: 5% non-fat dry milk in TBST. Detection: ECL Enhanced Kit. Exposure time: 120s.

## 实验步骤

访问官网浏览详情: [www.ablybio.cn](http://www.ablybio.cn)