

# TIFY11B Rabbit pAb

货号: **AYP23478**

## 产品信息

反应	Arabidopsis thaliana
宿主	Rabbit
克隆性	Polyclonal
预测反应	
应用	WB
推荐浓度	<b>WB:</b> 1:100 - 1:500
理论分子量	29KDa
实测分子量	25KDa
形式	Liquid
保存条件	Store at -20°C. Avoid freeze / thaw cycles. Buffer: PBS with 0.05% proclin300,50% glycerol,pH7.3.
偶联物	Unconjugated
阳性对照	Seedling,Inflorescences,Before inflorescence,Rosette leaf
细胞定位	Cytoplasm
纯化	Affinity purification

## 抗原信息

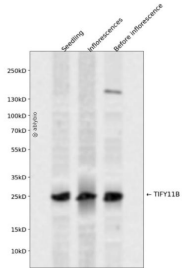
抗原信息	A synthetic peptide corresponding to a sequence within amino acids 170-269 of arabidopsis thaliana TIFY 11B (NP_565043.1).
序列	NNEDQETGQQHQVVERIARRASLHRFFAKRKDRAVARAPYQVNQHGSHLPPKPEMVAPSIKSGQSSQHIATPPKPKAHN HMPMEVDKKEGQSSKNLELKL

## 靶点信息

研究背景	JAZ6 transcript levels rise in response to a jasmonate stimulus and a GFP:JAZ6 fusion protein localizes to the nucleus. Application of jasmonate methyl ester to Arabidopsis roots reduces the levels of a JAZ6:GUS fusion protein, presumably by stimulating ubiquitin-proteasome-mediated degradation.
基因ID	843577

基因名	
Swiss	Q9C9E3
别名	jasmonate-zim-domain protein 6; T10D10.8; T10D10_8; TIFY DOMAIN PROTEIN 11B; TIFY11B

## 产品验证



Western blot analysis of TIFY11B expressed in Seedling, Inflorescences, Before inflorescence using TIFY11B Rabbit pAb at 1:1000. Secondary antibody: HRP Goat Anti-Rabbit IgG (H+L) at 1:5000. Lysates/protein s: 30ug per lane. Blocking buffer: 5% non-fat dry milk in TBST. Detection: ECL Enhanced Kit. Exposure time: 120s.

## 实验步骤

访问官网浏览详情: [www.ablybio.cn](http://www.ablybio.cn)