

# BAK1 Rabbit pAb

货号: **AYP23458**

## 产品信息

反应	Arabidopsis thaliana
宿主	Rabbit
克隆性	Polyclonal
预测反应	
应用	WB
推荐浓度	<b>WB:</b> 1:500 - 1:1000
理论分子量	68kDa
实测分子量	68kDa
形式	Liquid
保存条件	Store at -20°C. Avoid freeze / thaw cycles. Buffer: PBS with 0.05% proclin300,50% glycerol,pH7.3.
偶联物	Unconjugated
阳性对照	Seedling,Inflorescences,Before inflorescence,Rosette leaf
细胞定位	plasma membrane
纯化	Affinity purification

## 抗原信息

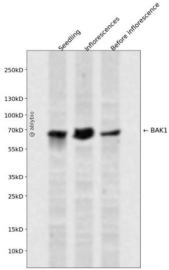
抗原信息	A synthetic peptide corresponding to a sequence within amino acids 516-615 of arabidopsis thaliana BAK 1 (NP_567920.1).
序列	KKLEALVDVDLQGNKYDDEEVEQLIQVALLCTQSSPMERPKMSEVVRMLEGDGLAERWEEWQKEEMFRQDFNYPTTHPA VSGWIIIGDSTSQIENEYPSGPR

## 靶点信息

研究背景	Leu-rich receptor Serine/threonine protein kinase. Component of BR signaling that interacts with BRI1 in vitro and in vivo to form a heterodimer. Brassinolide-dependent association of BRI1 and BAK1 in vivo. Phosphorylation of both BRI1 and BAK1 on Thr residues was BR dependent. Although BAK1 and BRI1 alone localize in the plasma membrane, when BAK1 and BRI1 are coexpressed, the heterodimer BAK1/BRI1 they form is localized in the endosome.
基因ID	829480

基因名	
Swiss	Q94F62
别名	ATBAK1; ATSERK3; BRI1-associated receptor kinase; ELG; ELONGATED; F17M5.190; F17M5_190; RECEPTOR KINASES LIKE SERK 10; RKS10; SERK3; SOMATIC EMBRYOGENESIS RECEPTOR-LIKE KINASE 3

## 产品验证



Western blot analysis of BAK1 expressed in Seedling, Inflorescences, Before inflorescence using BAK1 Rabbit pAb at 1:1000. Secondary antibody: HRP Goat Anti-Rabbit IgG (H+L) at 1:5000. Lysates/proteins: 30 µg per lane. Blocking buffer: 5% non-fat dry milk in TBST. Detection: ECL Enhanced Kit. Exposure time: 120s.

## 实验步骤

访问官网浏览详情: [www.ablybio.cn](http://www.ablybio.cn)