

# COR28 Rabbit pAb

货号: **AYP23457**

## 产品信息

反应	Arabidopsis thaliana
宿主	Rabbit
克隆性	Polyclonal
预测反应	
应用	WB
推荐浓度	<b>WB:</b> 1:500 - 1:1000
理论分子量	24kDa
实测分子量	30KDa
形式	Liquid
保存条件	Store at -20°C. Avoid freeze / thaw cycles. Buffer: PBS with 0.05% proclin300,50% glycerol,pH7.3.
偶联物	Unconjugated
阳性对照	Seedling,Inflorescences,Before inflorescence,Rosette leaf
细胞定位	nucleus
纯化	Affinity purification

## 抗原信息

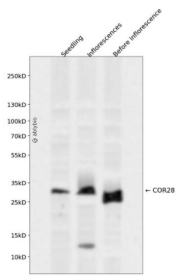
抗原信息	Recombinant fusion protein containing a sequence corresponding to amino acids 50-170 of arabidopsis thaliana COR28 (NP_567946.1).
序列	SKLDECTAWTNEKHNSYLDYLESSFVRQLYLLGGGTQRLSRTRDVSNSHKSADQFTVLQNGCWQKVNFGKKQSCLETSSEFRFHRNSLRNKPENSGNYTMGTTVQGDVLCHEDETKHSE

## 靶点信息

研究背景	Light and temperature are two key environmental signals that profoundly affect plant growth and development, COR28 and COR27 are negative regulators of freezing tolerance but positive regulators of flowering. They are involved in central circadian clock regulation and in flowering promotion, by binding to the chromatin of clock-associated evening genes TOC1, PRR5, ELF4 and cold-responsive genes in order to repress their transcription. And also are direct targets of CCA1, which represses their transcription via chromatin binding.
------	--

基因ID	829544
基因名	
Swiss	Q8L983
别名	F17I5.170; F17I5_170

## 产品验证



Western blot analysis of COR28 expressed in Seedling, Inflorescences, Before inflorescence using COR28 Rabbit pAb at 1:1000. Secondary antibody: HRP Goat Anti-Rabbit IgG (H+L) at 1:5000. Lysates/proteins: 30ug per lane. Blocking buffer: 5% non-fat dry milk in TBST. Detection: ECL Enhanced Kit. Exposure time : 120s.

## 实验步骤

访问官网浏览详情: [www.ablybio.cn](http://www.ablybio.cn)