

BSU1 Rabbit pAb

货号: AYP23456

产品信息

反应	Arabidopsis thaliana
宿主	Rabbit
克隆性	Polyclonal
预测反应	
应用	WB
推荐浓度	WB: 1:500 - 1:1000
理论分子量	87kDa
实测分子量	88KDa
形式	Liquid
保存条件	Store at -20°C. Avoid freeze / thaw cycles. Buffer: PBS with 0.05% proclin300,50% glycerol,pH7.3.
偶联物	Unconjugated
阳性对照	Seedling,Inflorescences,Before inflorescence
细胞定位	cytoplasm,nucleus,plasma membrane
纯化	Affinity purification

抗原信息

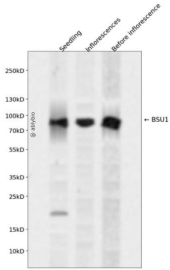
抗原信息	A synthetic peptide corresponding to a sequence within amino acids 694-793 of arabidopsis thaliana BSU 1 (NP_171844.6).
序列	FLERNGLEMILRAHECVIDGFERFADGRLITVFSATNYCGTAQNAGAILVIGRDMVIYPKLIHPPPPISSEEDYTDKAWMQ ELNIEMPPTPARGESSE

靶点信息

研究背景	encodes a serine#Aeithreonine protein phosphatase with an N-terminal Kelch-repeat domain, which is nuclear localized and expressed preferentially in elongating cells. Genetic evidence suggest that this gene plays a redundant role (along with other members of the same gene family) in modulating growth in response to brassinosteroid.
基因ID	838804

基因名	
Swiss	Q9LR78
别名	BRI1 SUPPRESSOR 1; F21B7.7

产品验证



Western blot analysis of BSU1 expressed in Seedling, Inflorescences, Before inflorescence using BSU1 Rabbit pAb at 1:1000. Secondary antibody: HRP Goat Anti-Rabbit IgG (H+L) at 1:5000. Lysates/proteins: 30ug per lane. Blocking buffer: 5% non-fat dry milk in TBST. Detection: ECL Enhanced Kit. Exposure time: 120s.

实验步骤

访问官网浏览详情: www.ablybio.cn