

RAV1 Rabbit pAb

货号: **AYP23455**

产品信息

| | |
|-------|--|
| 反应 | Arabidopsis thaliana |
| 宿主 | Rabbit |
| 克隆性 | Polyclonal |
| 预测反应 | |
| 应用 | WB |
| 推荐浓度 | WB: 1:500 - 1:1000 |
| 理论分子量 | 89kDa |
| 实测分子量 | 39KDa |
| 形式 | Liquid |
| 保存条件 | Store at -20°C. Avoid freeze / thaw cycles. Buffer: PBS with 0.05% proclin300,50% glycerol,pH7.3. |
| 偶联物 | Unconjugated |
| 阳性对照 | Seedling,Inflorescences,Before inflorescence,Rosette leaf |
| 细胞定位 | nucleus |
| 纯化 | Affinity purification |

抗原信息

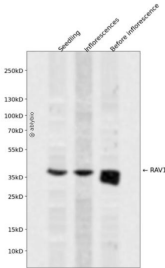
| | |
|------|---|
| 抗原信息 | A synthetic peptide corresponding to a sequence within amino acids 245-344 of arabidopsis thaliana RAV 1 (NP_172784.1). |
| 序列 | WNSSQSYVLTKGWSRFVKEKNLRAGDVVSFSRSNGDQQLYIGWKSRSGLDAGRVLRLFGVNISPESRNDVVGNK RVNDTEMLSLVCSKKQRIFHAS |

靶点信息

| | |
|------|--|
| 研究背景 | Encodes an AP2/B3 domain transcription factor which is upregulated in response to low temperature. It contains a B3 DNA binding domain. It has circadian regulation and may function as a negative growth regulator. |
| 基因ID | 837886 |

| | |
|-------|---|
| 基因名 | |
| Swiss | Q9ZWM9 |
| 别名 | AtRAV1; EDF4; ETHYLENE RESPONSE DNA BINDING FACTOR 4; related to ABI3/VP1 1; T6J4.2; T6J4_2 |

产品验证



Western blot analysis of RAV1 expressed in Seedling, Inflorescences, Before inflorescence using RAV1 Rabbit pAb at 1:1000. Secondary antibody: HRP Goat Anti-Rabbit IgG (H+L) at 1:5000. Lysates/proteins: 30 µg per lane. Blocking buffer: 5% non-fat dry milk in TBST. Detection: ECL Enhanced Kit. Exposure time: 120s.

实验步骤

访问官网浏览详情: www.ablybio.cn